

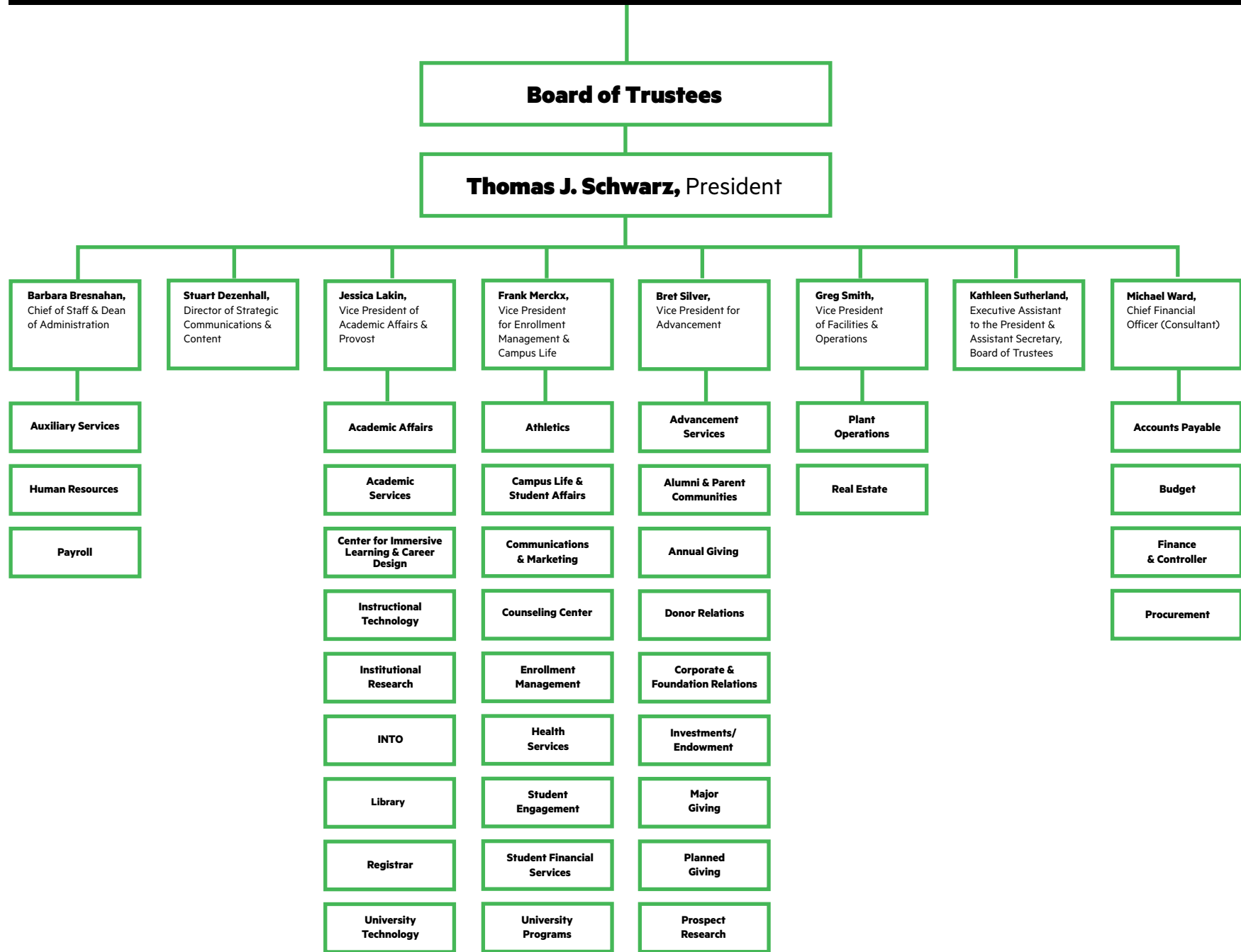
# **DREW UNIVERSITY STAFF ORGANIZATIONAL CHART GUIDE**

As of November 1, 2021

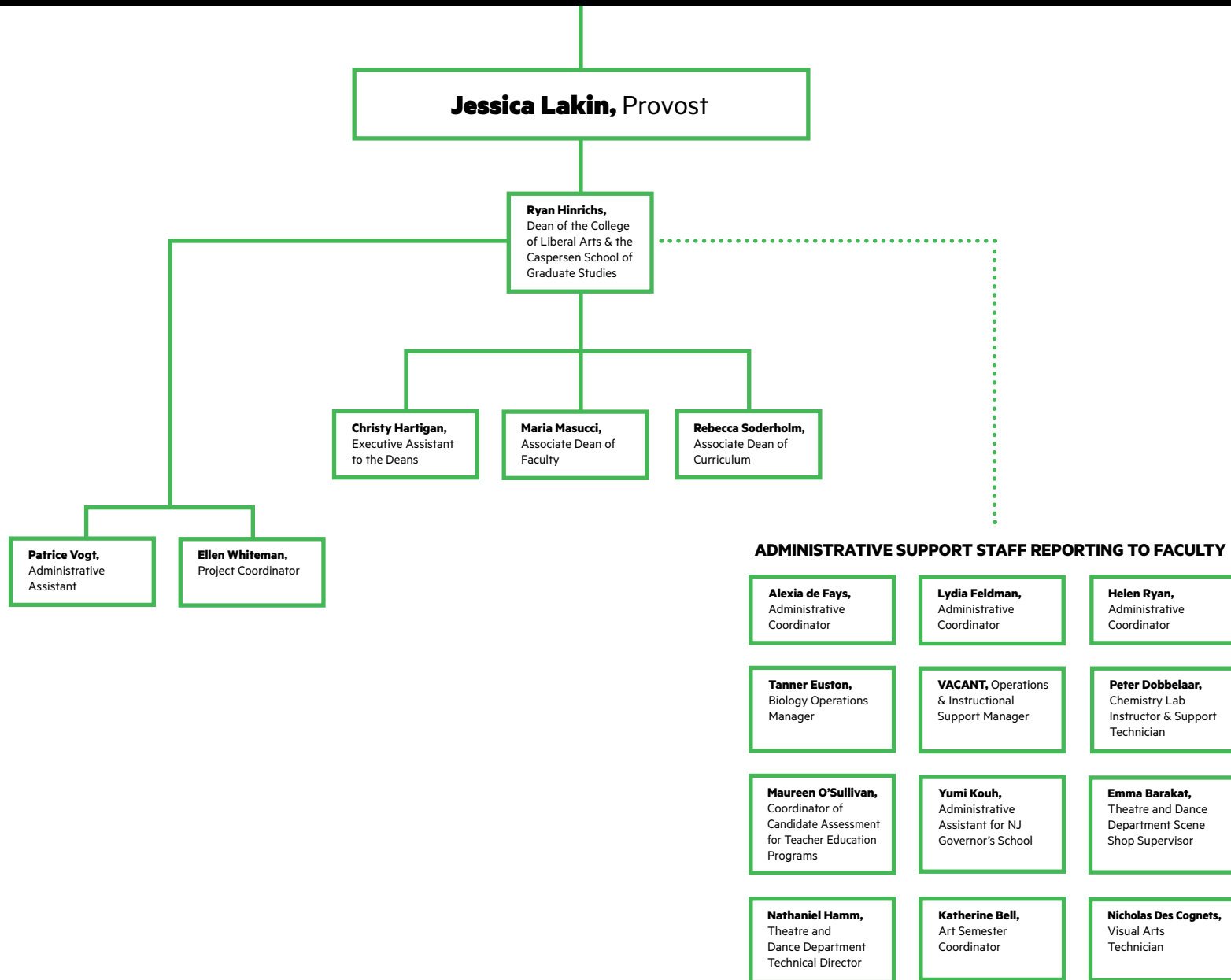
DREW

University Leadership.....	3
Academic Affairs .....	4
Academic Services.....	5
Advancement .....	6
Athletics.....	7
Auxiliary Services .....	10
Campus Life & Student Affairs .....	11
Campus Security .....	12
Center for Immersive Learning & Career Design .....	13
Communications & Marketing.....	14
Counseling Center .....	15
Enrollment Management .....	16
Enrollment Management & Campus Life Leadership .....	17
Fiscal Operations.....	18
Health Services.....	19
Human Resources & Payroll .....	20
Instructional Technology.....	21
International Student & Scholar Services .....	22
INTO Drew Administration .....	23
Library .....	24
Plant Administration .....	25
President's Office.....	26
Provost Office Leadership .....	27
Registrar's Office .....	28
Student Engagement .....	29
Student Financial Services.....	30
Theological School Dean's Office.....	31
University Technology .....	32

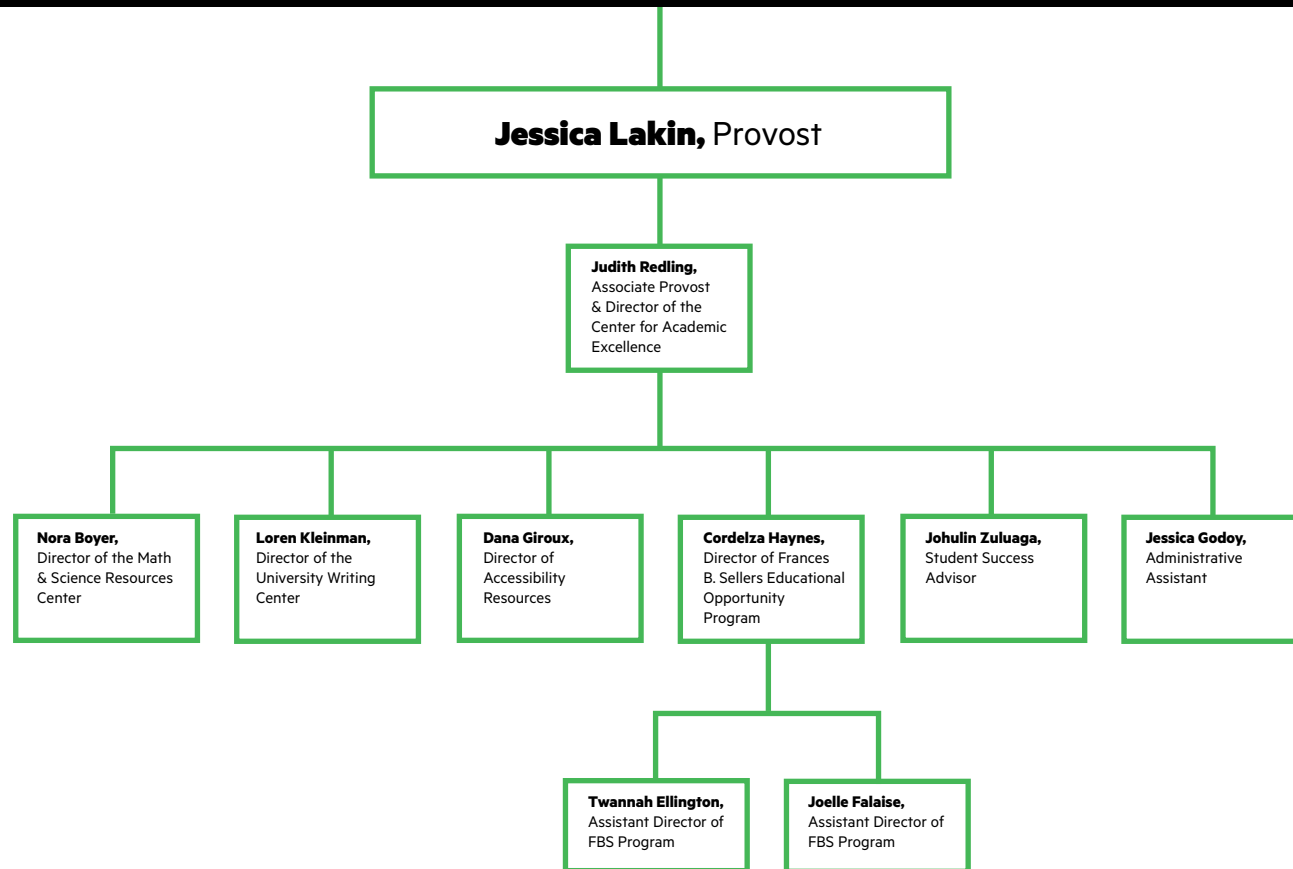
# University Leadership

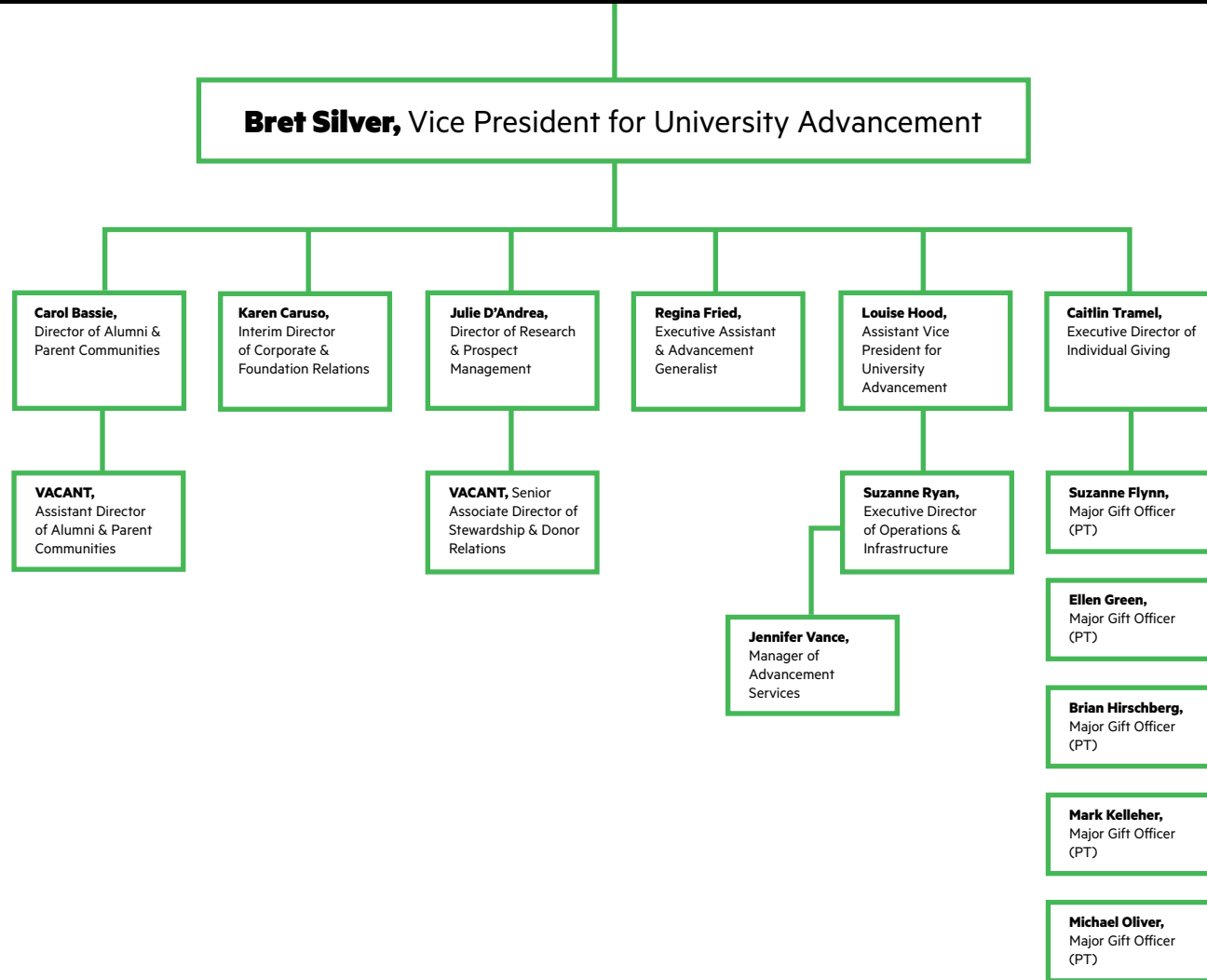


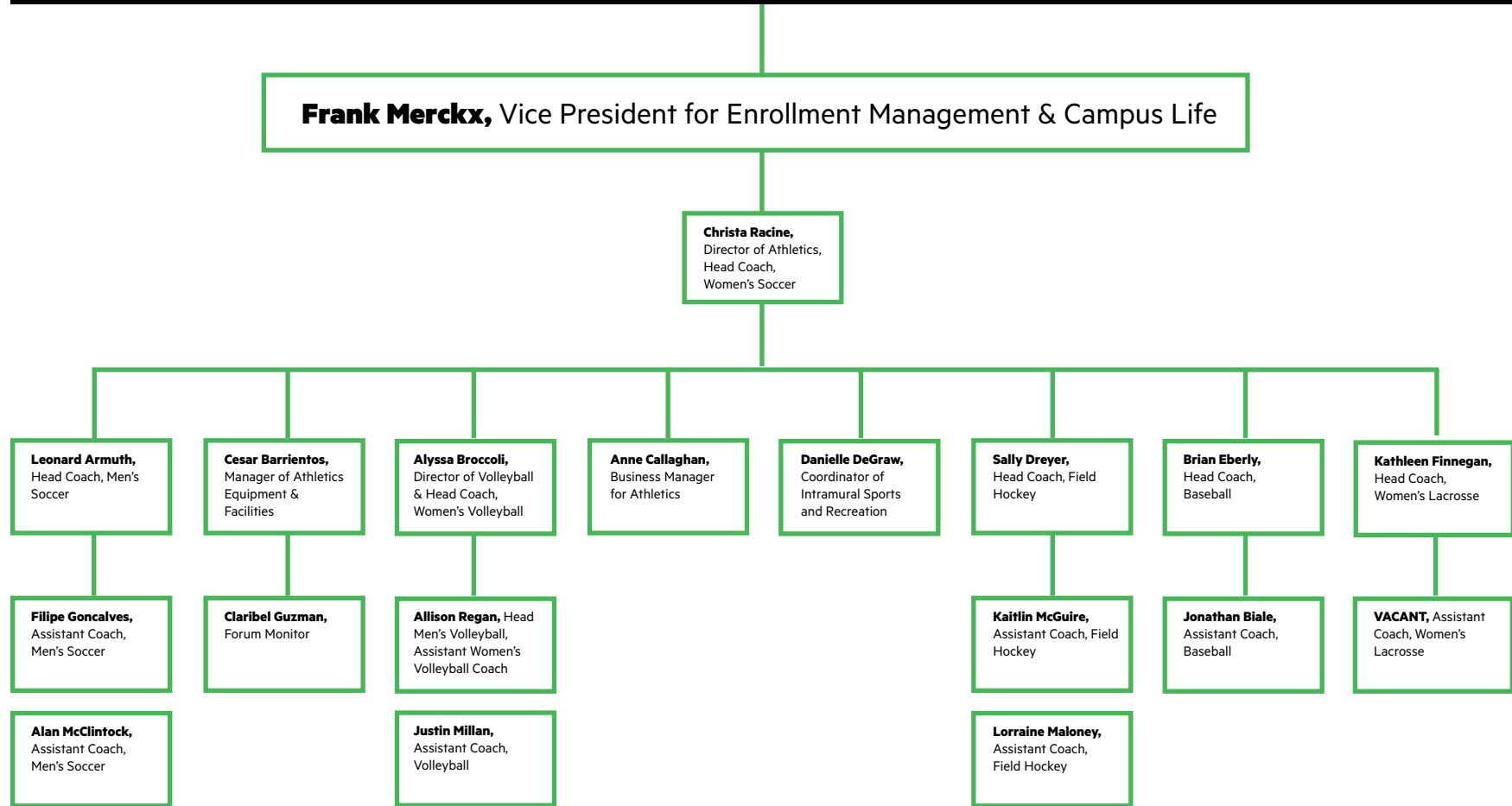
# Academic Affairs (CLA & CSGS)



# Academic Services

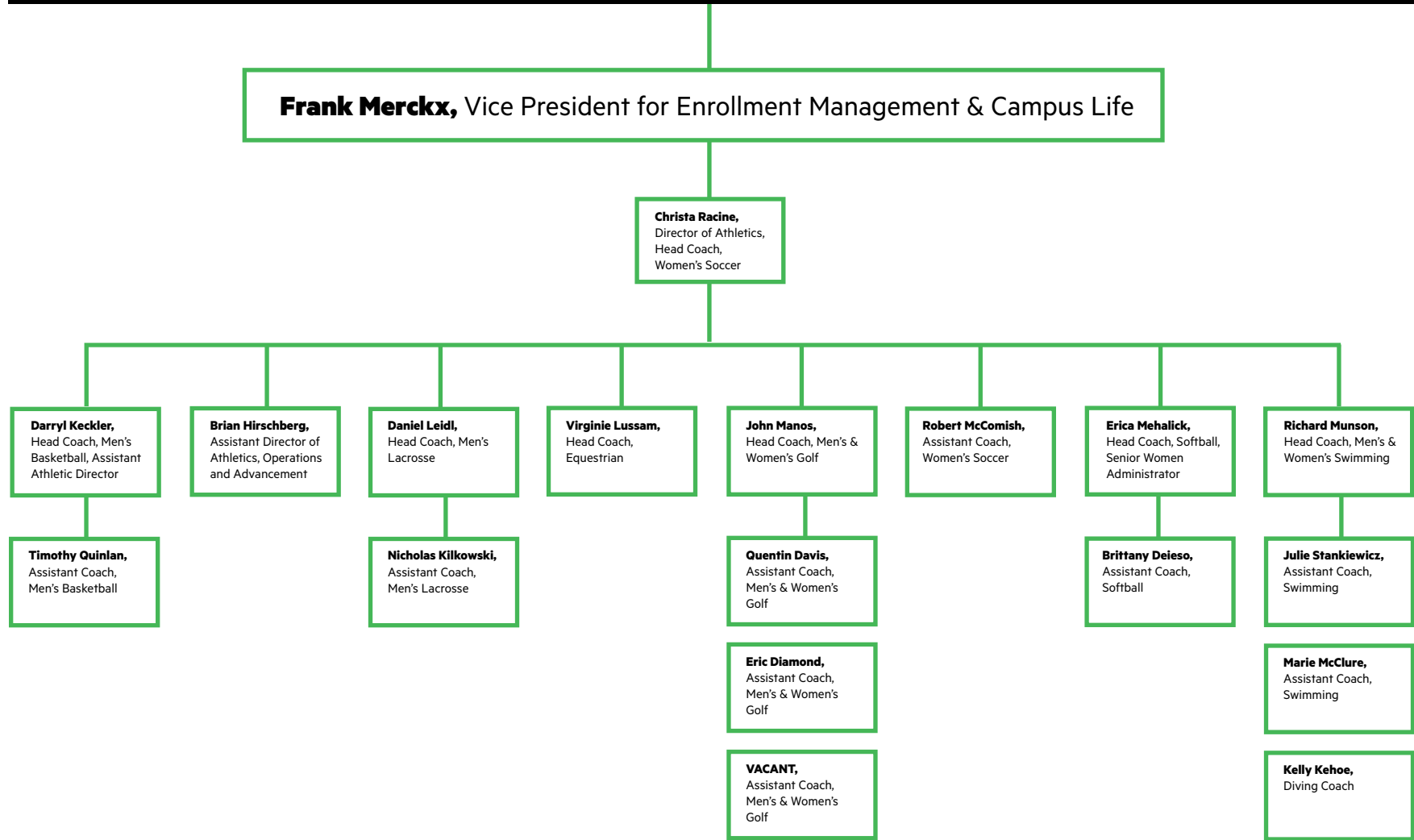






CONTINUED ON NEXT PAGE

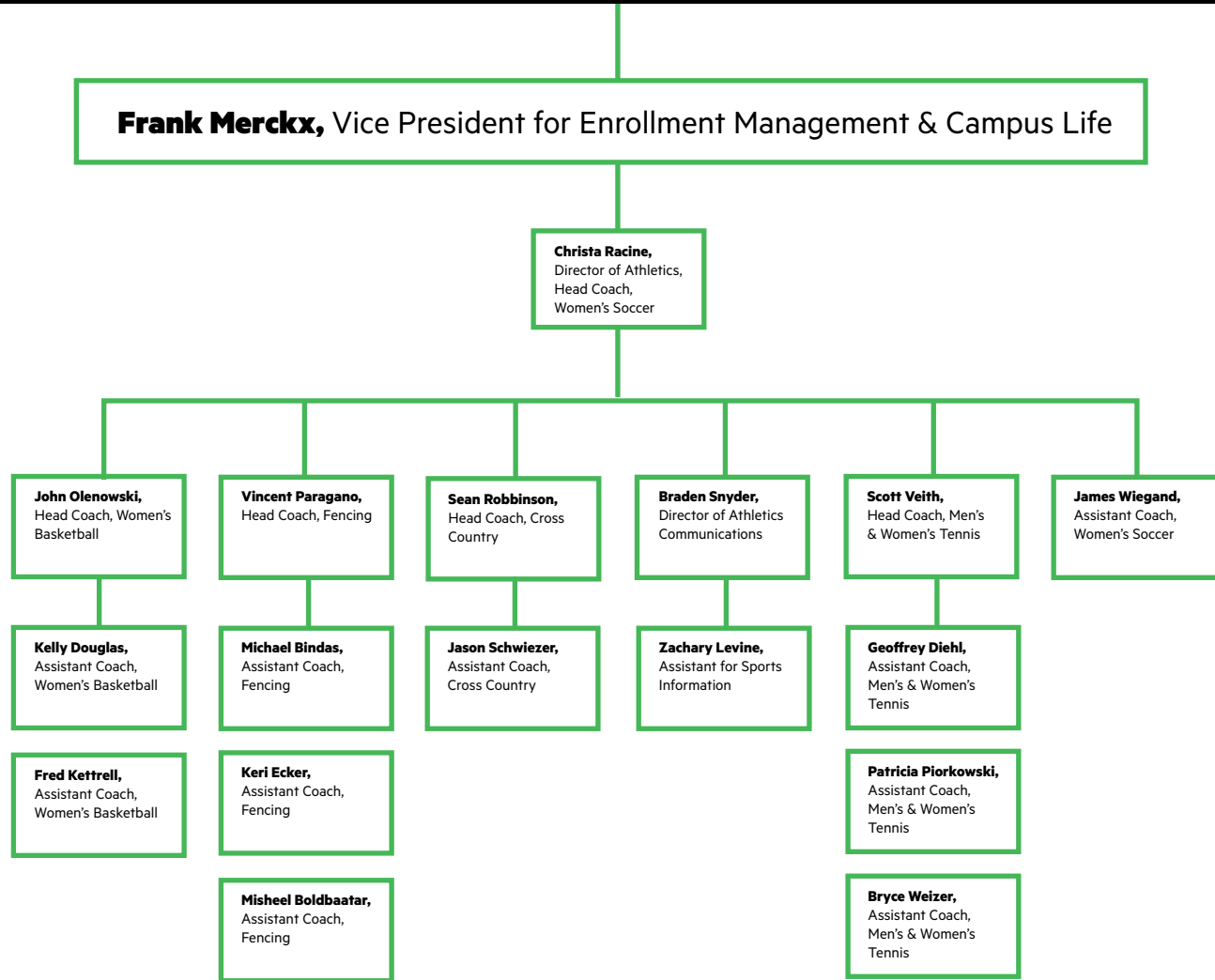




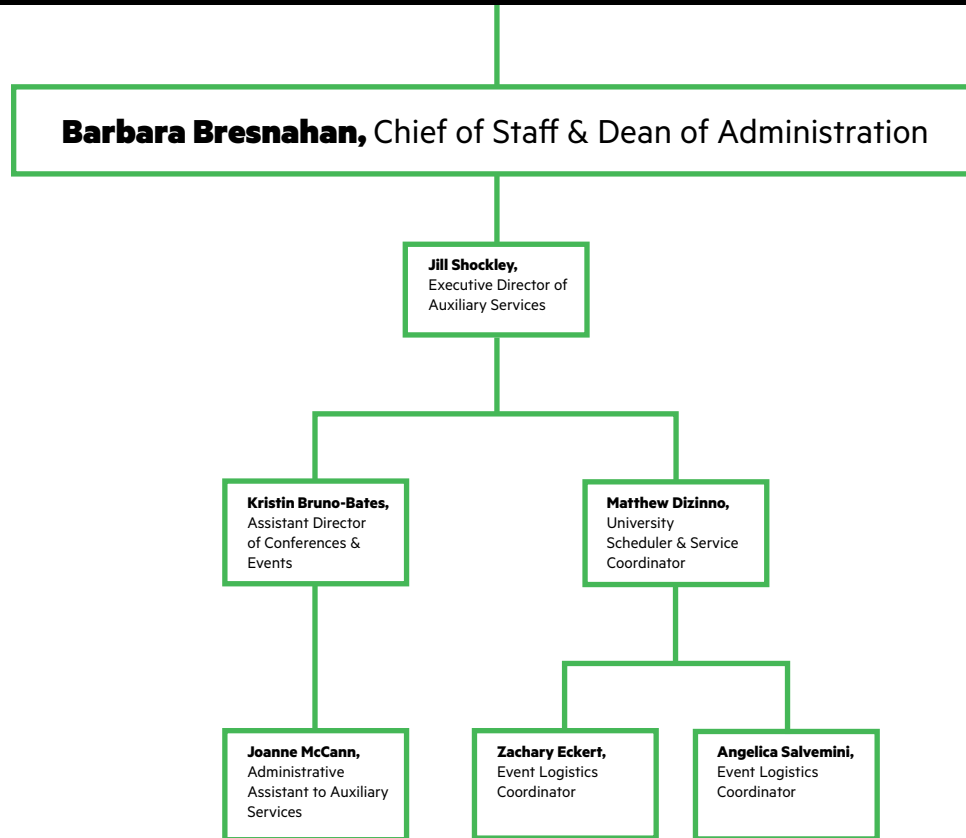
CONTINUED ON NEXT PAGE



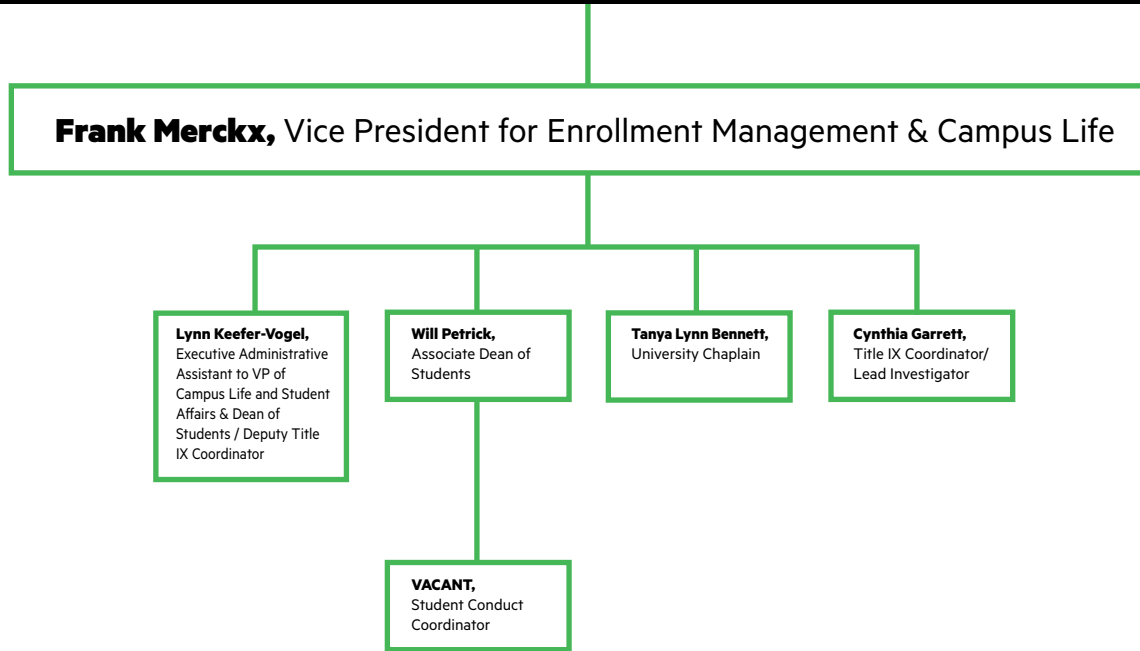




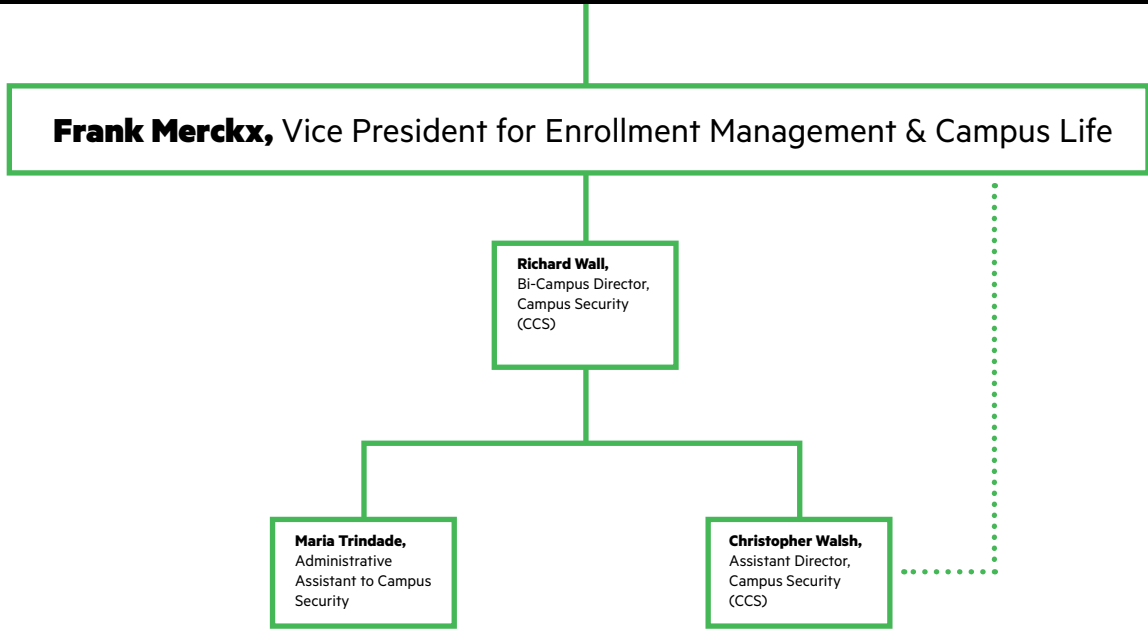
# Auxiliary Service



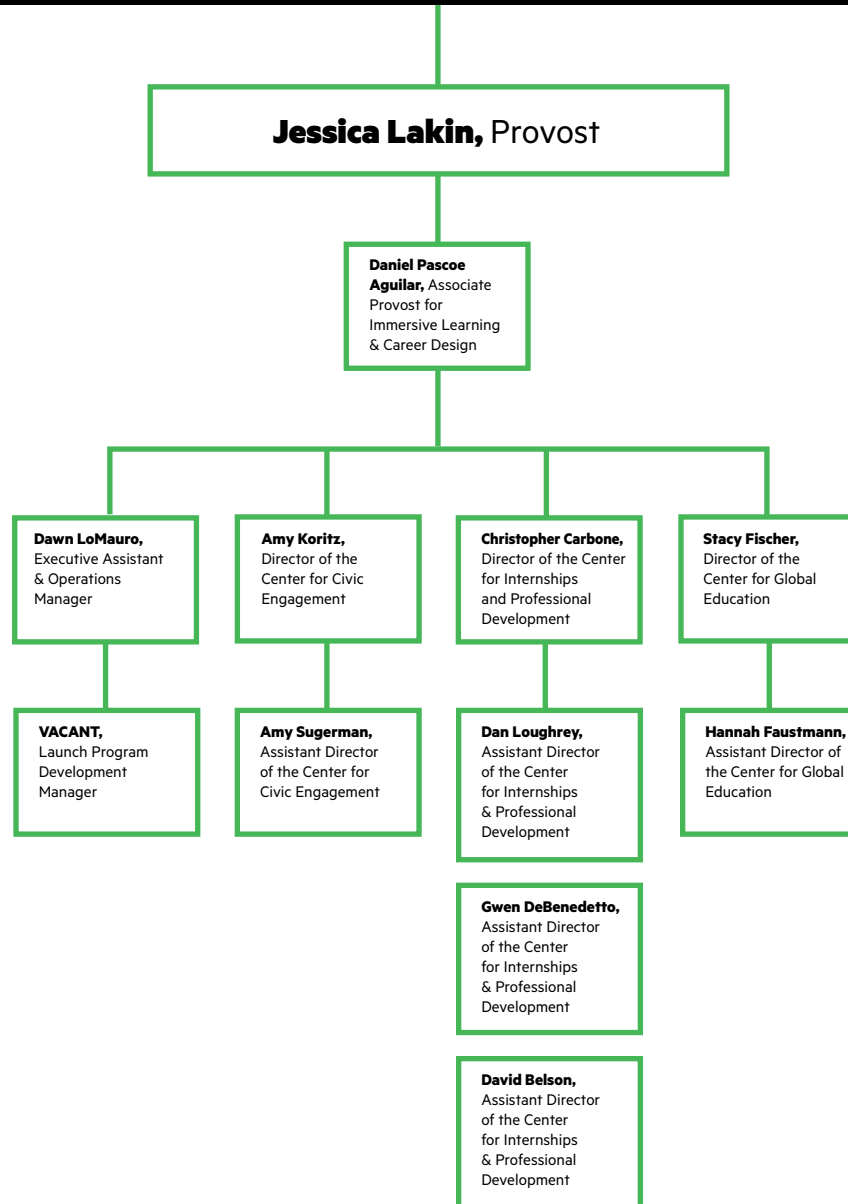
# Campus Life & Student Affairs



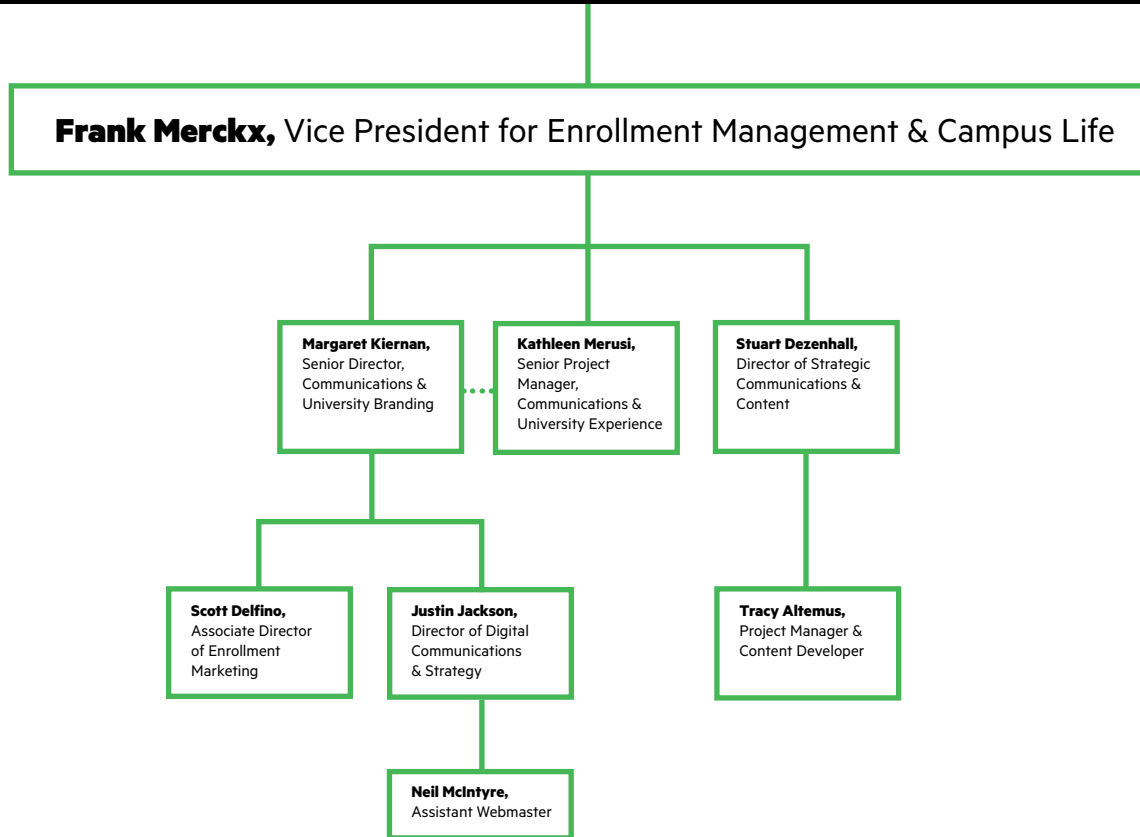
# Campus Security

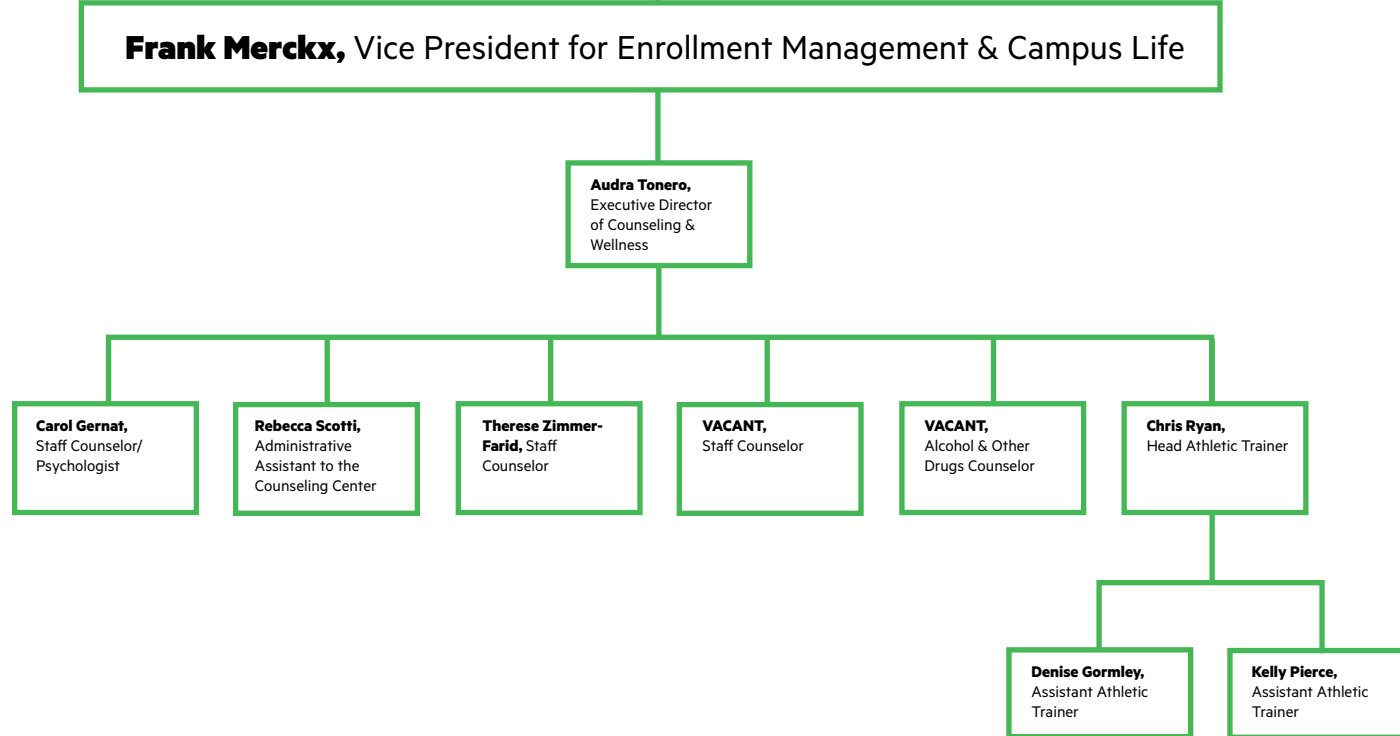


# Center for Immersive Learning & Career Design

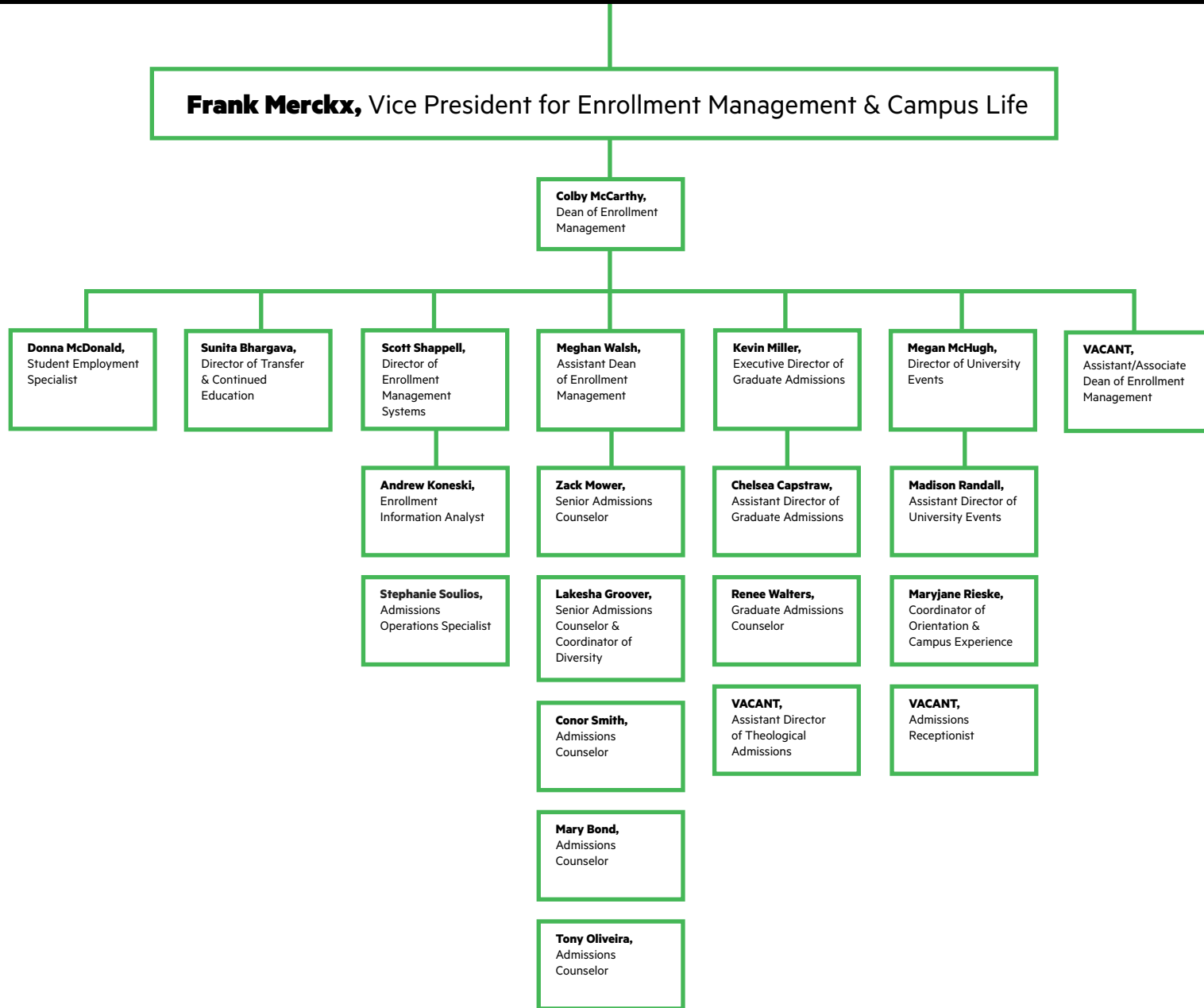


# Communications & Marketing



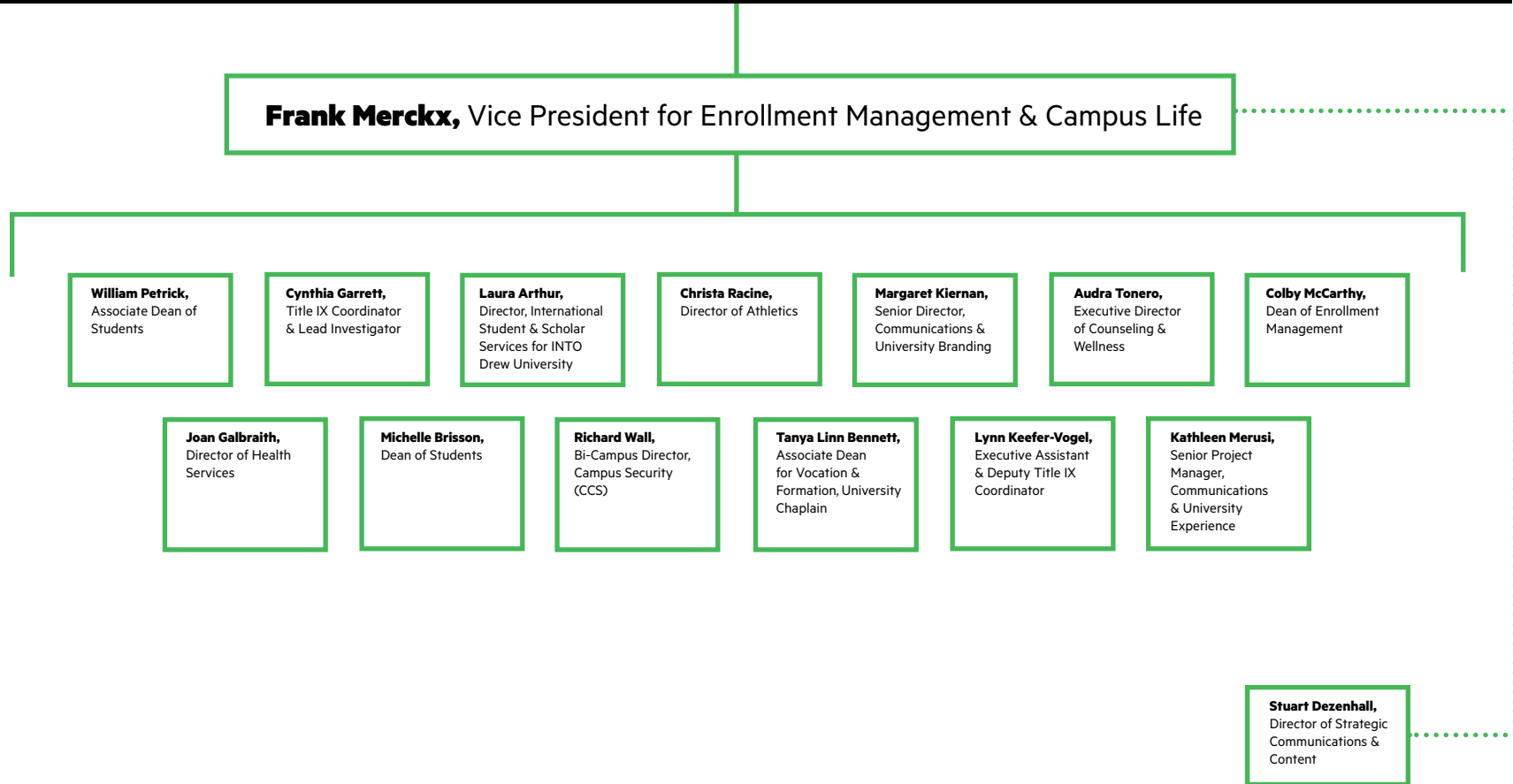


# Enrollment Management

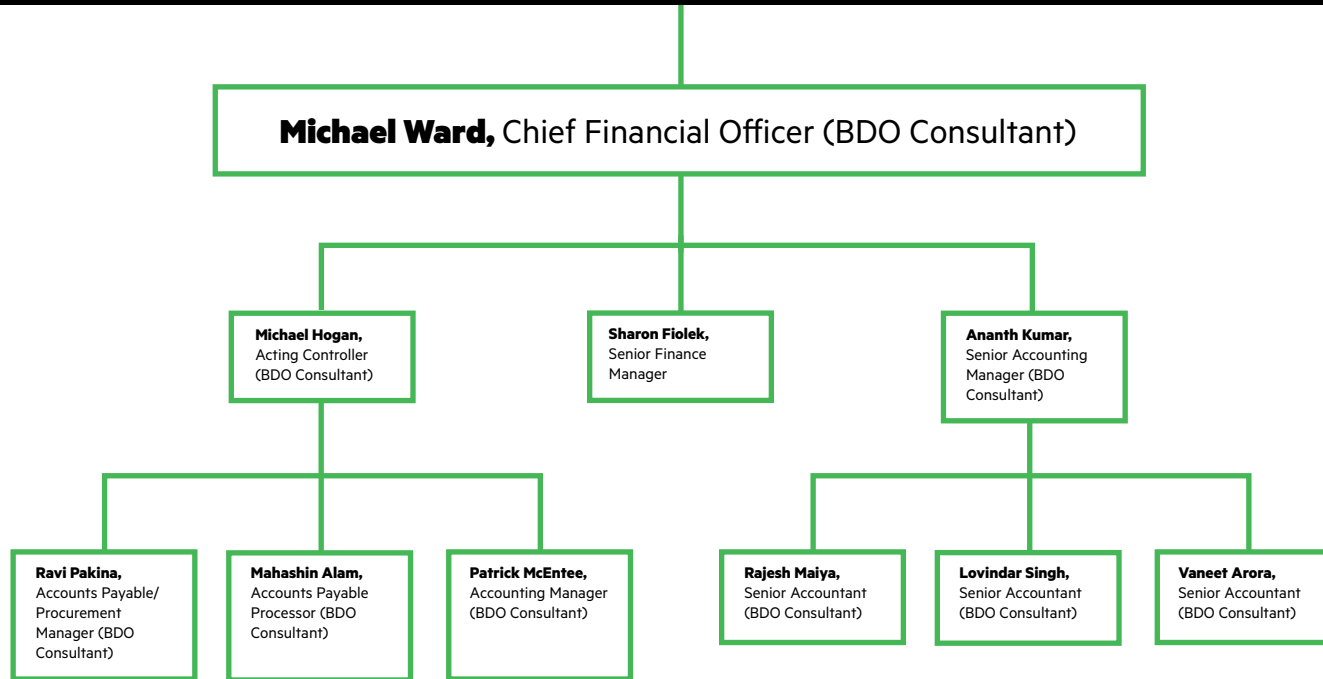




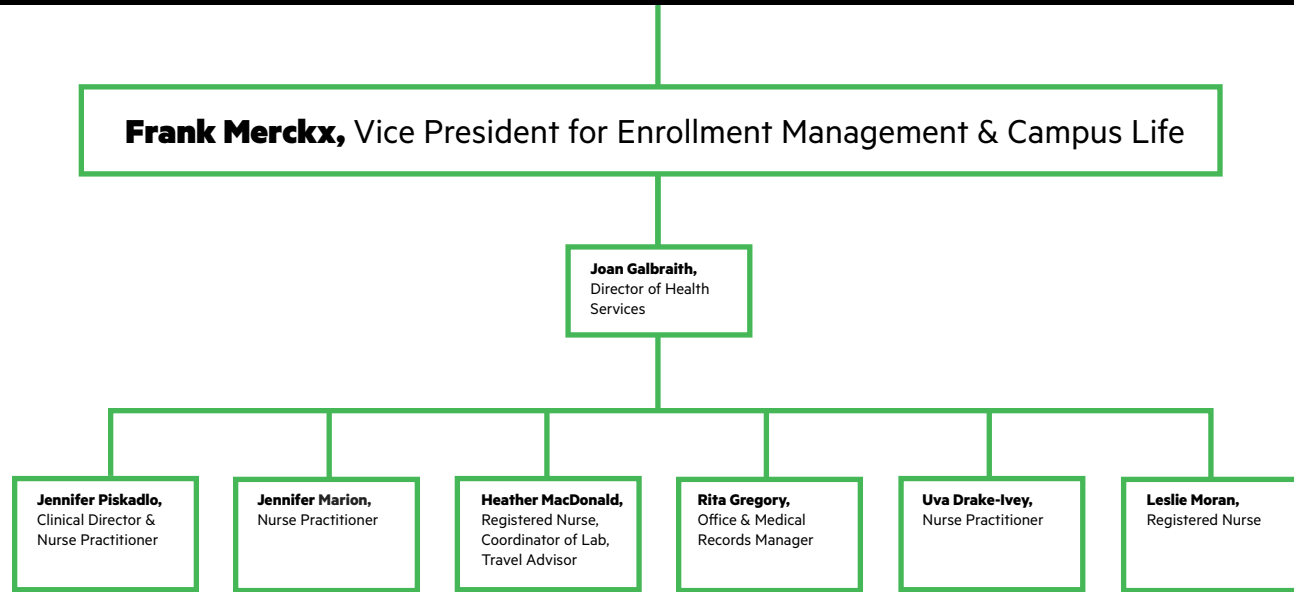
# Enrollment Management & Campus Life Leadership



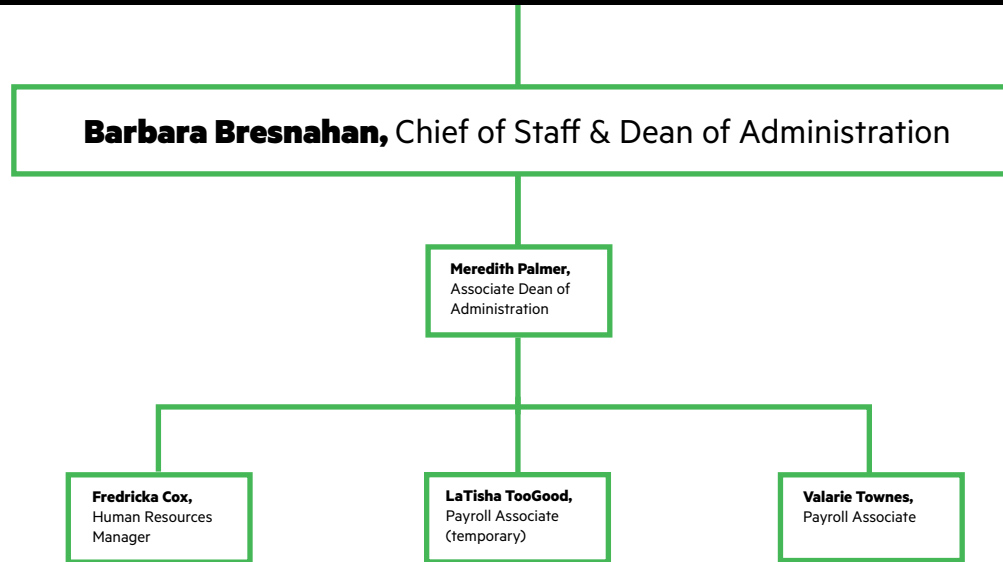
# Fiscal Operations



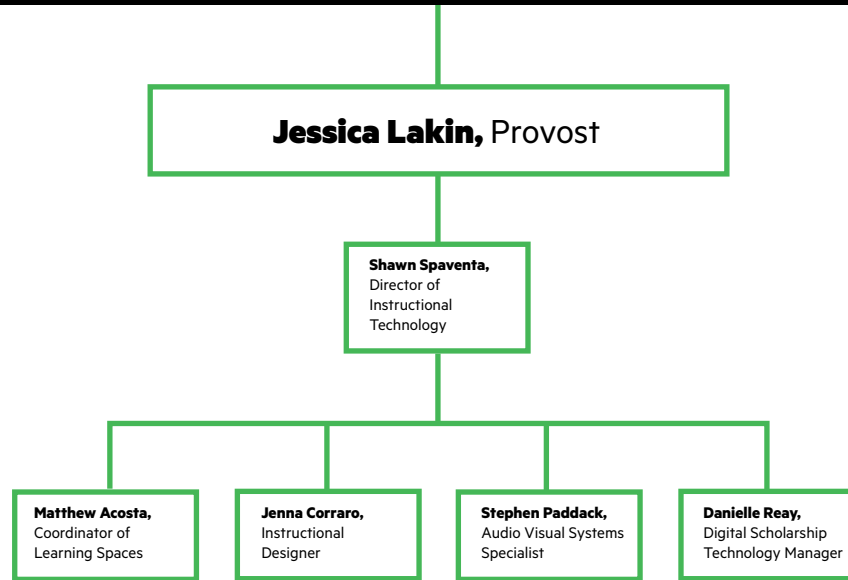
# Health Services



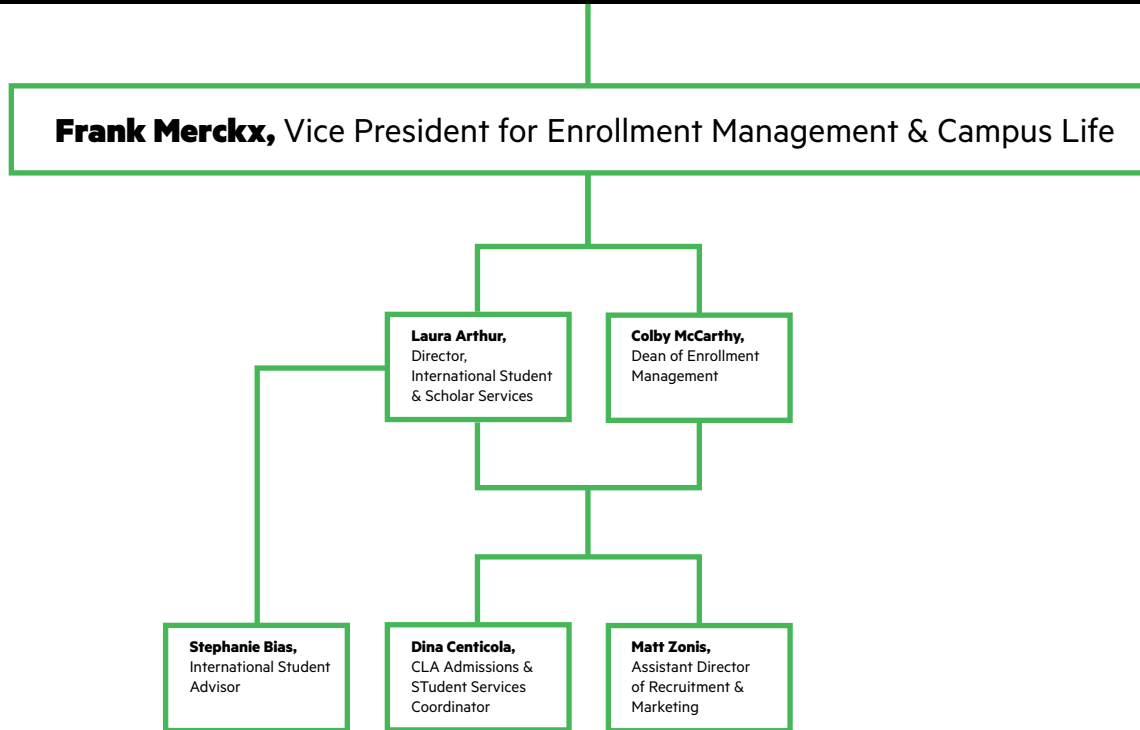
# Human Resources & Payroll



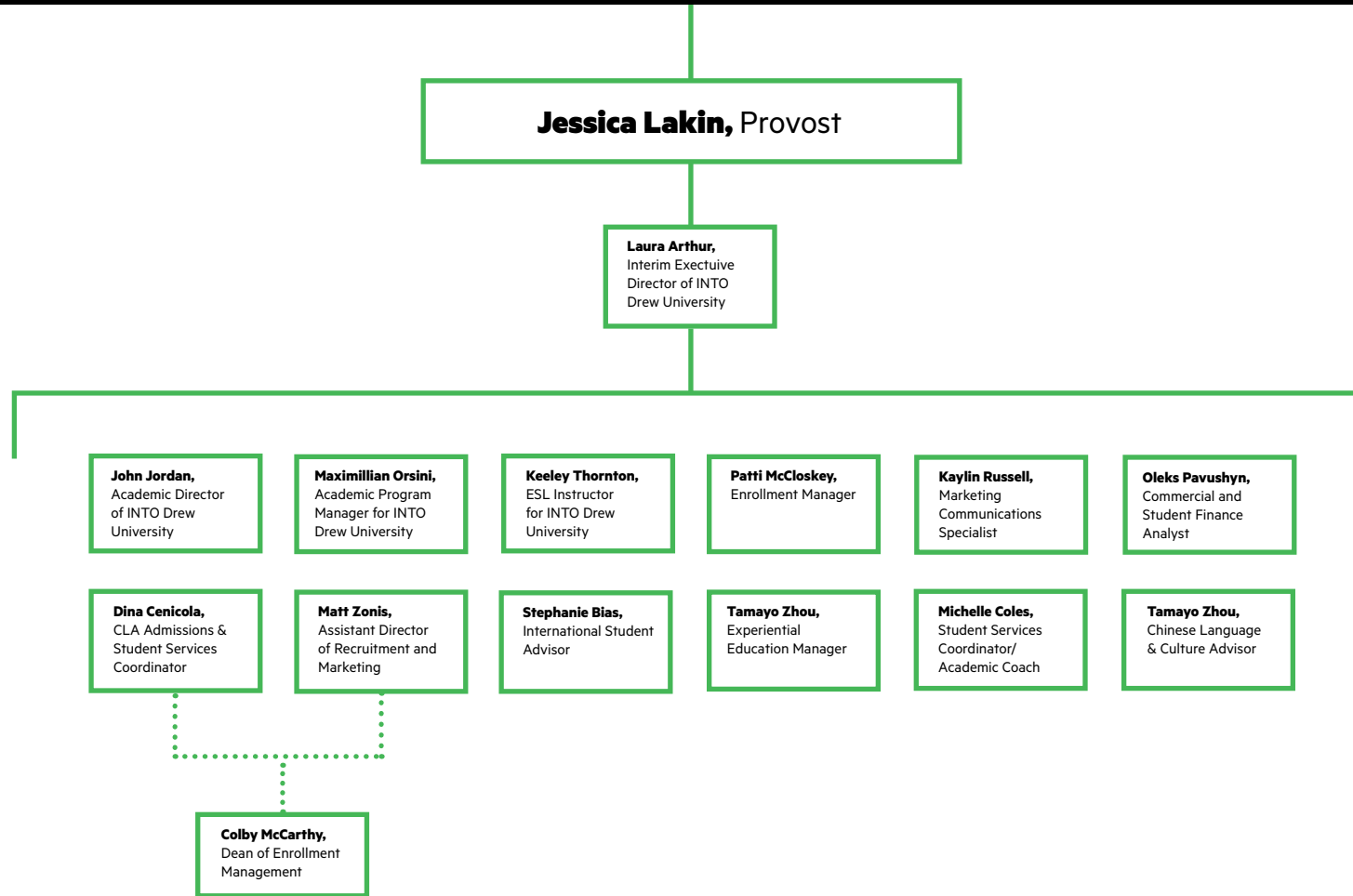
# Instructional Technology

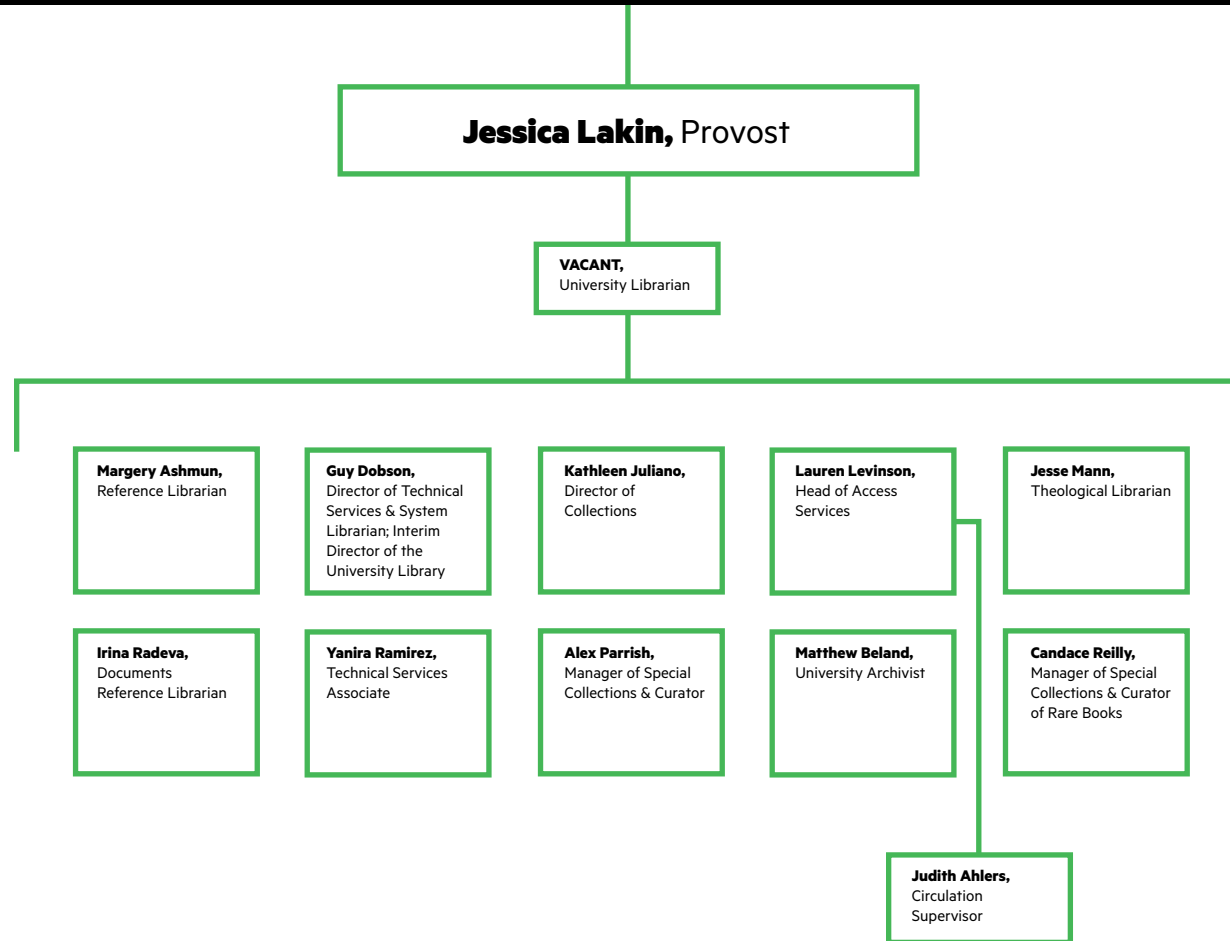


# International Student & Scholar Services



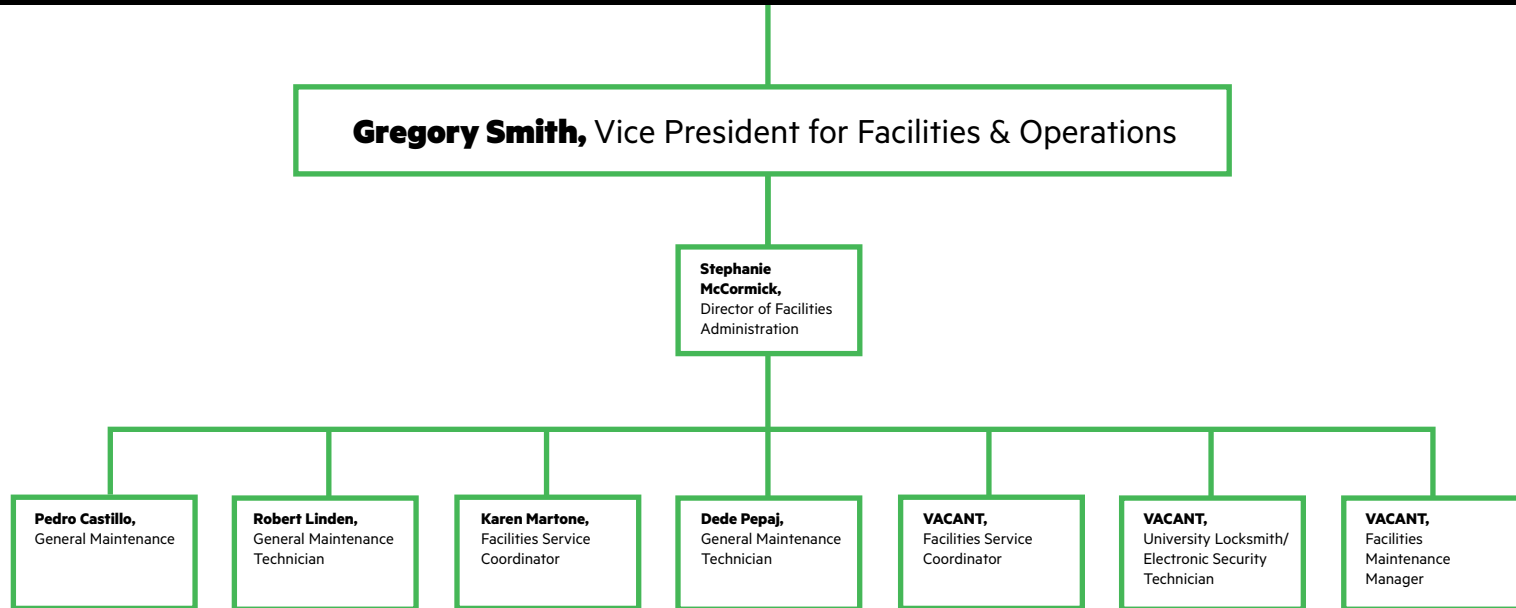
# INTO Drew Administration



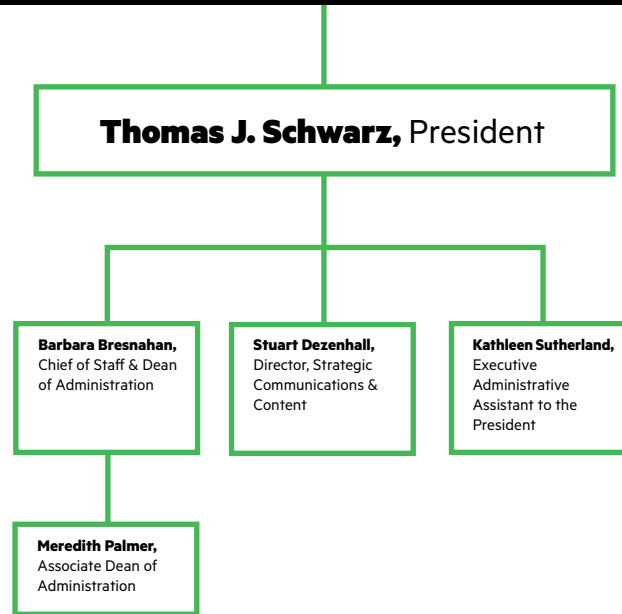




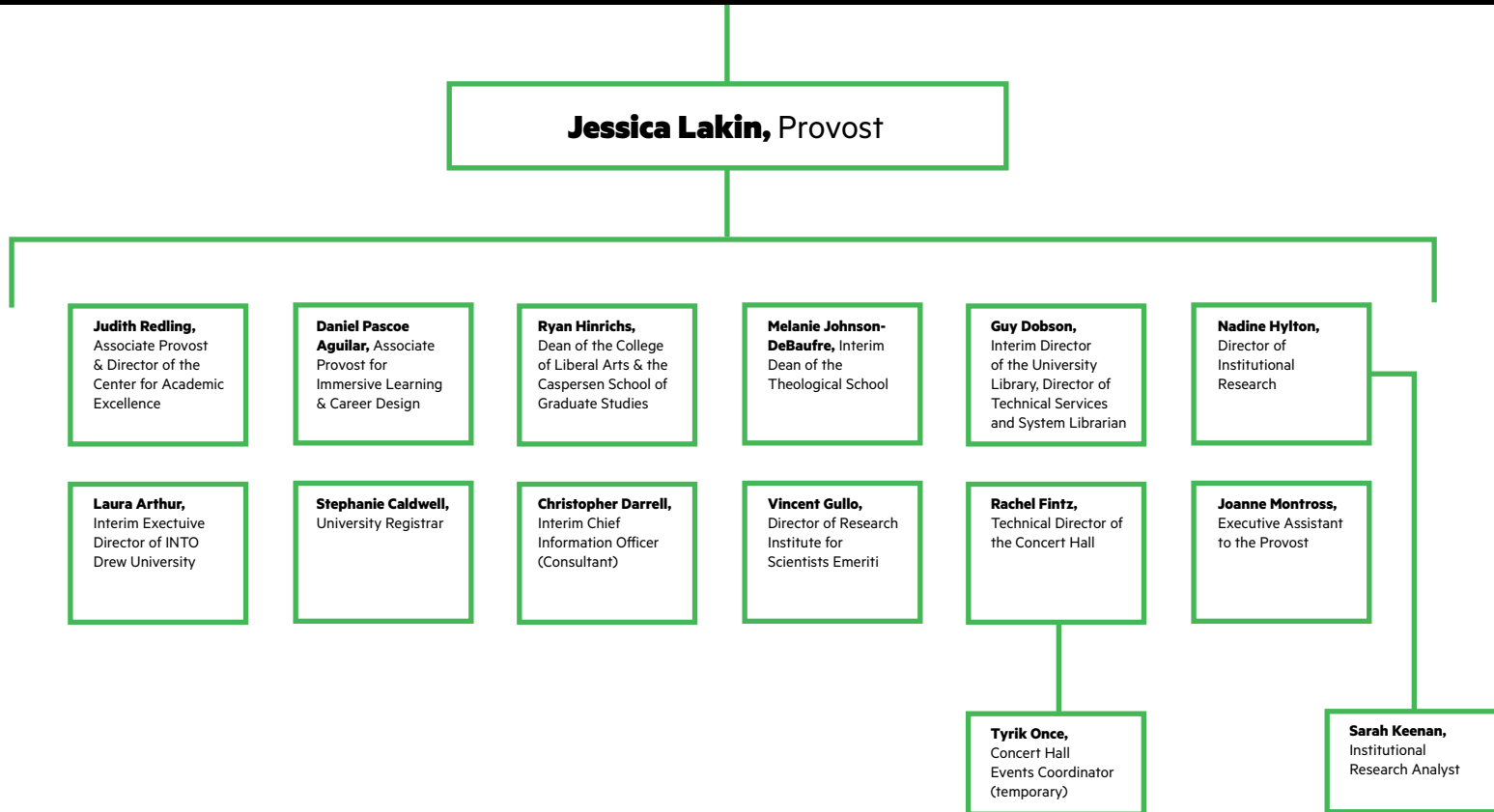
# Plant Administration



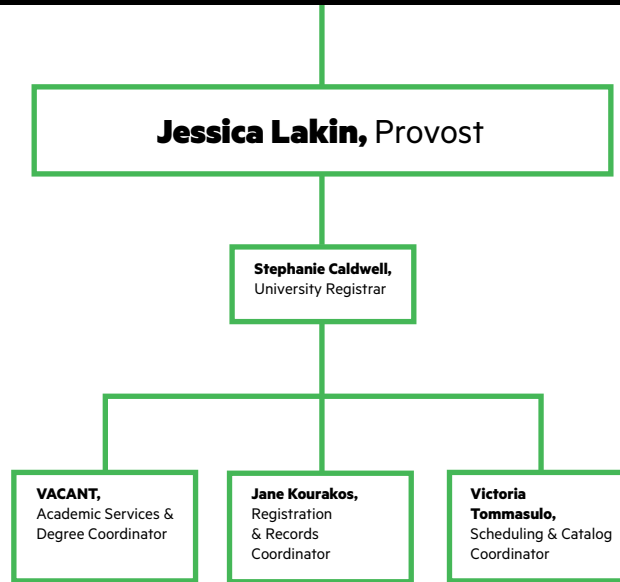
# President's Office



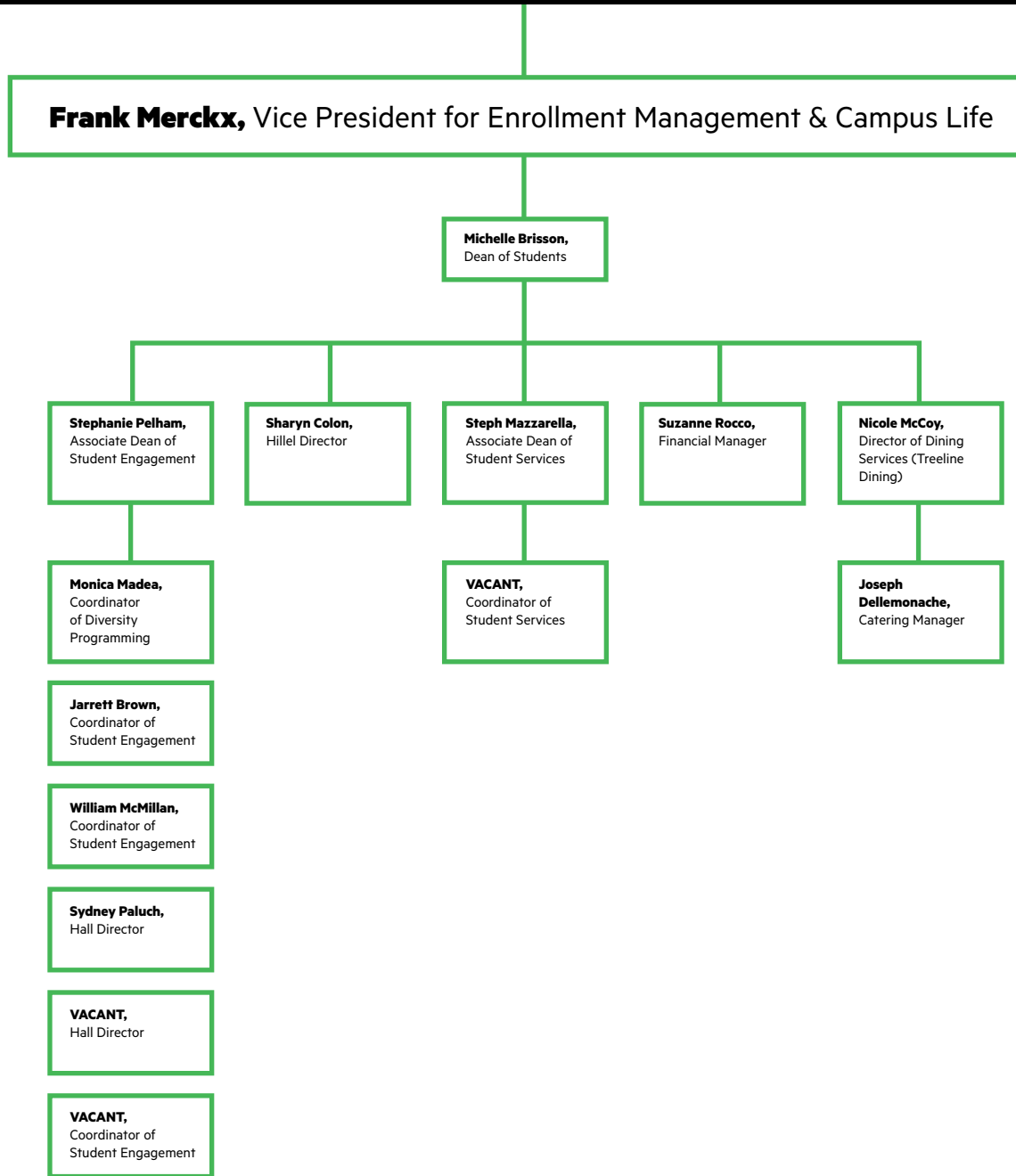
# Provost Office Leadership



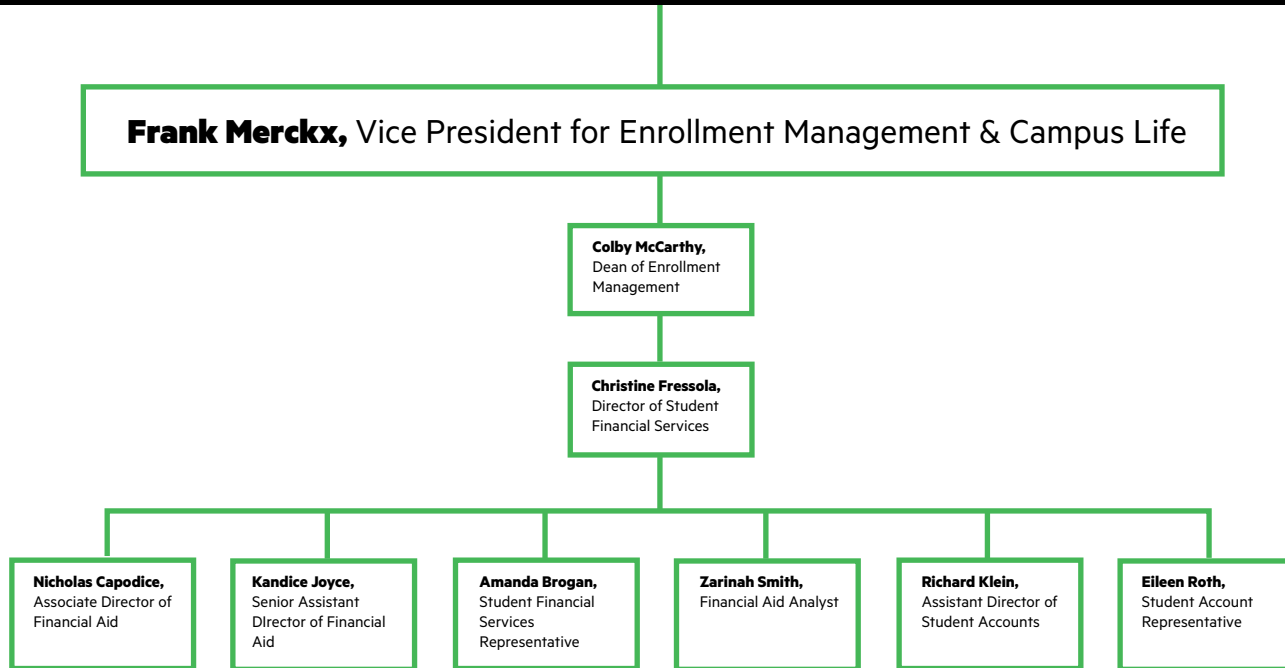
# Registrar's Office



# Student Engagement



# Student Financial Services



# Theological School Dean's Office

