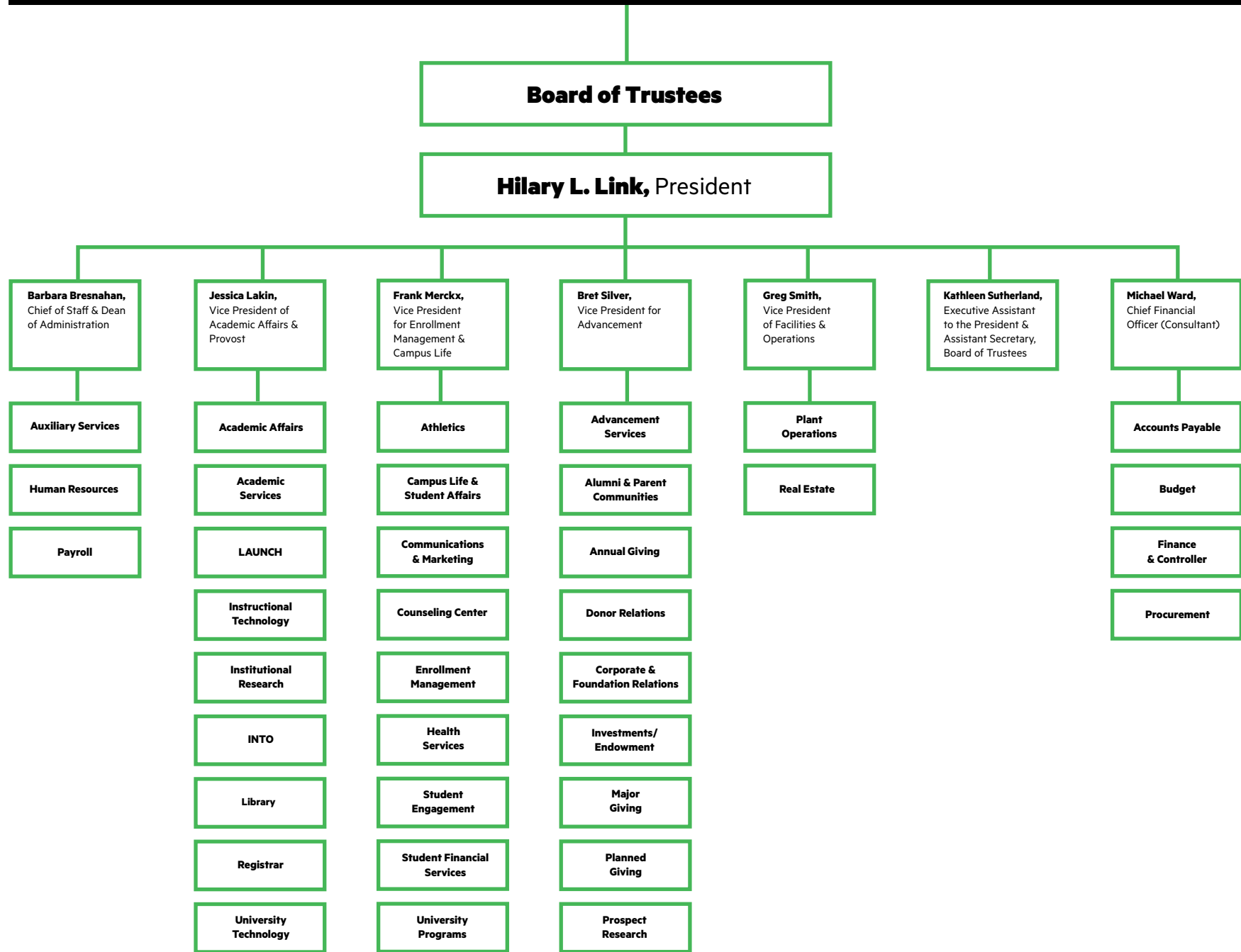


**DREW UNIVERSITY
STAFF ORGANIZATIONAL
CHART GUIDE**

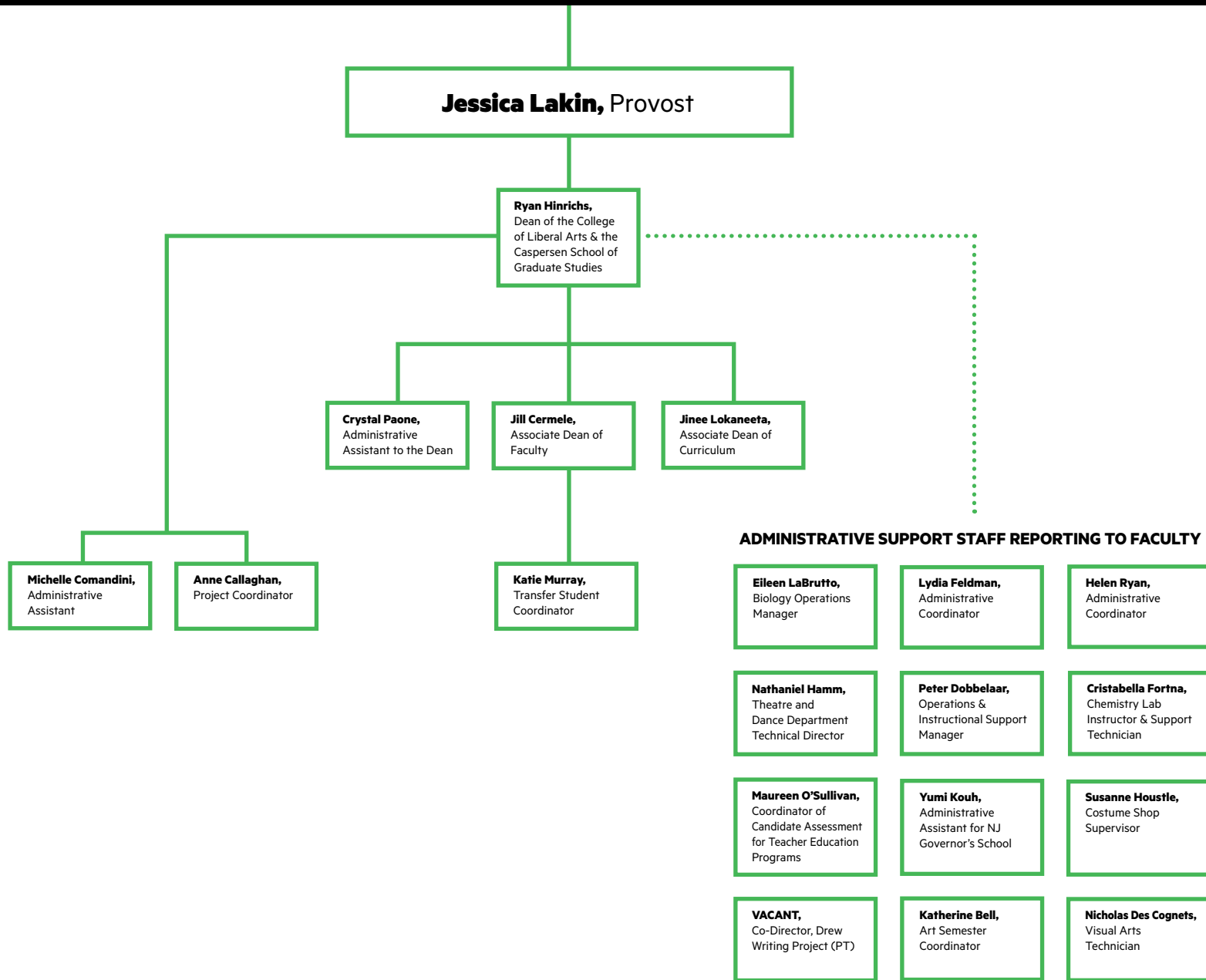
DREW

University Leadership	3
Academic Affairs (CLA & CSGS)	4
Academic Affairs (Theological School)	5
Academic Services	6
Advancement	7
Athletics	8
Auxiliary Services	11
Campus Security	12
Caspersen and Theological School Admissions	13
CLA Admissions	14
Communications & Marketing	15
Counseling Center	16
Enrollment Management & Campus Life and Student Affairs	17
Fiscal Operations	18
Health Services	19
Human Resources, Payroll & Student Employment/CampusWorks....	20
Instructional Technology	21
INTO Drew Administration	22
LAUNCH	23
Library	24
Plant Administration	25
President's Office	26
Provost's Office Leadership.....	27
Registrar's Office	28
Student Engagement	29
Student Financial Services	30
University Technology/CampusWorks	31

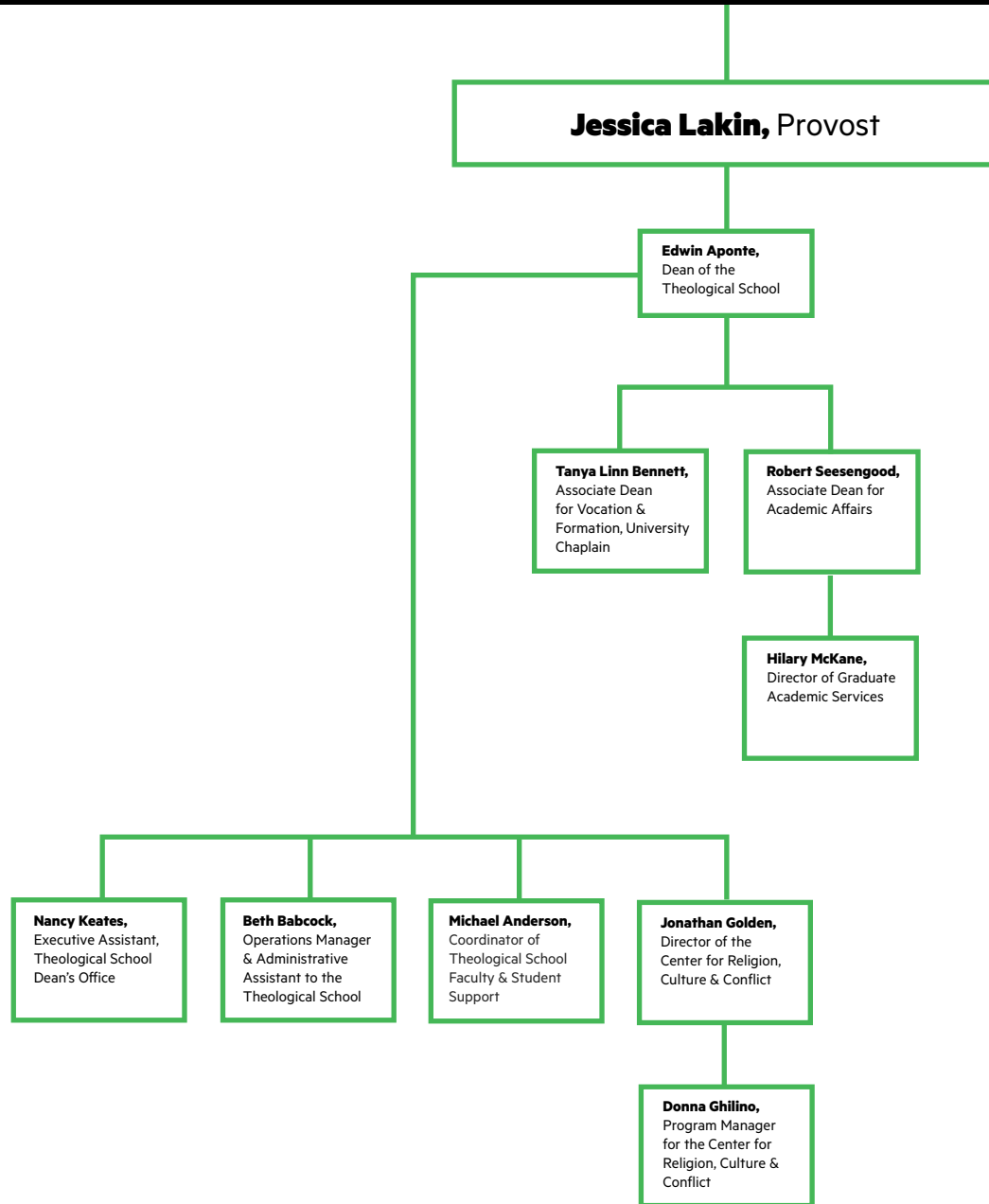
University Leadership



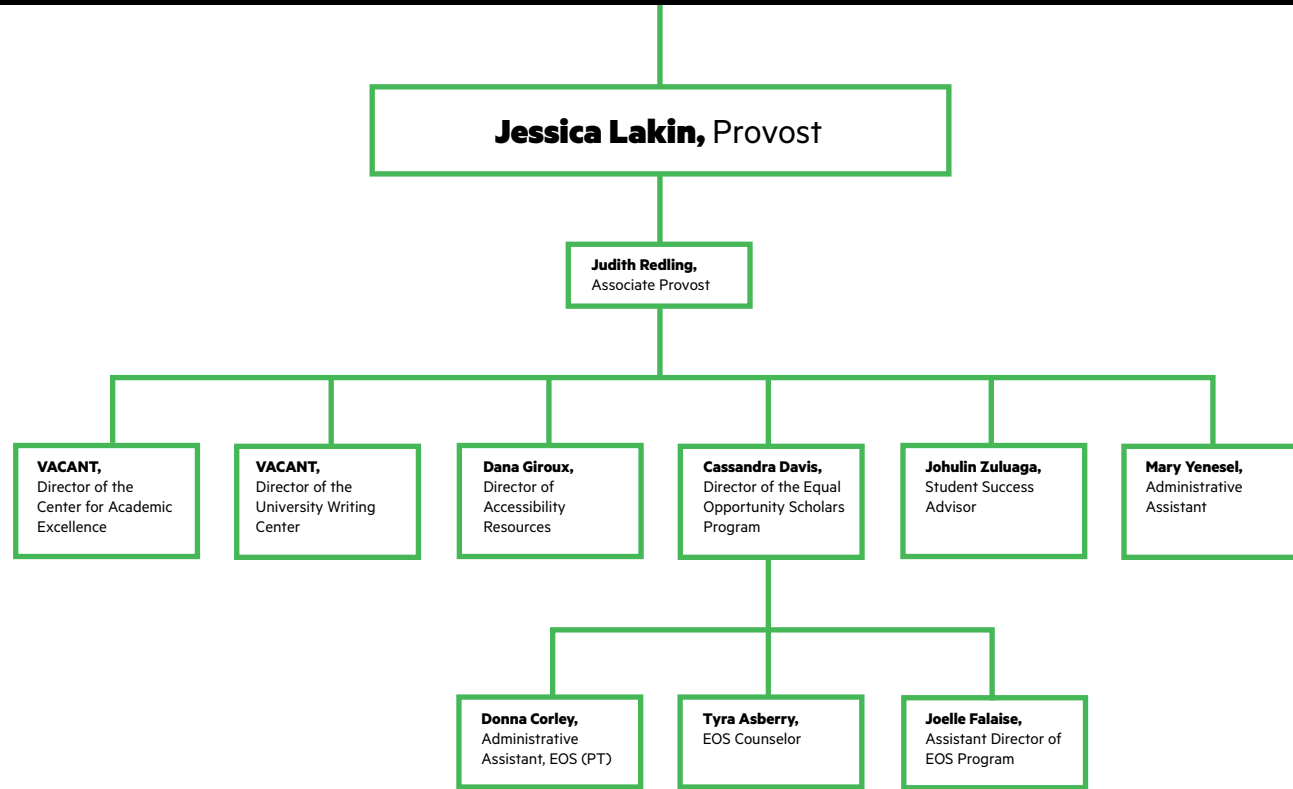
Academic Affairs (CLA & CSGS)



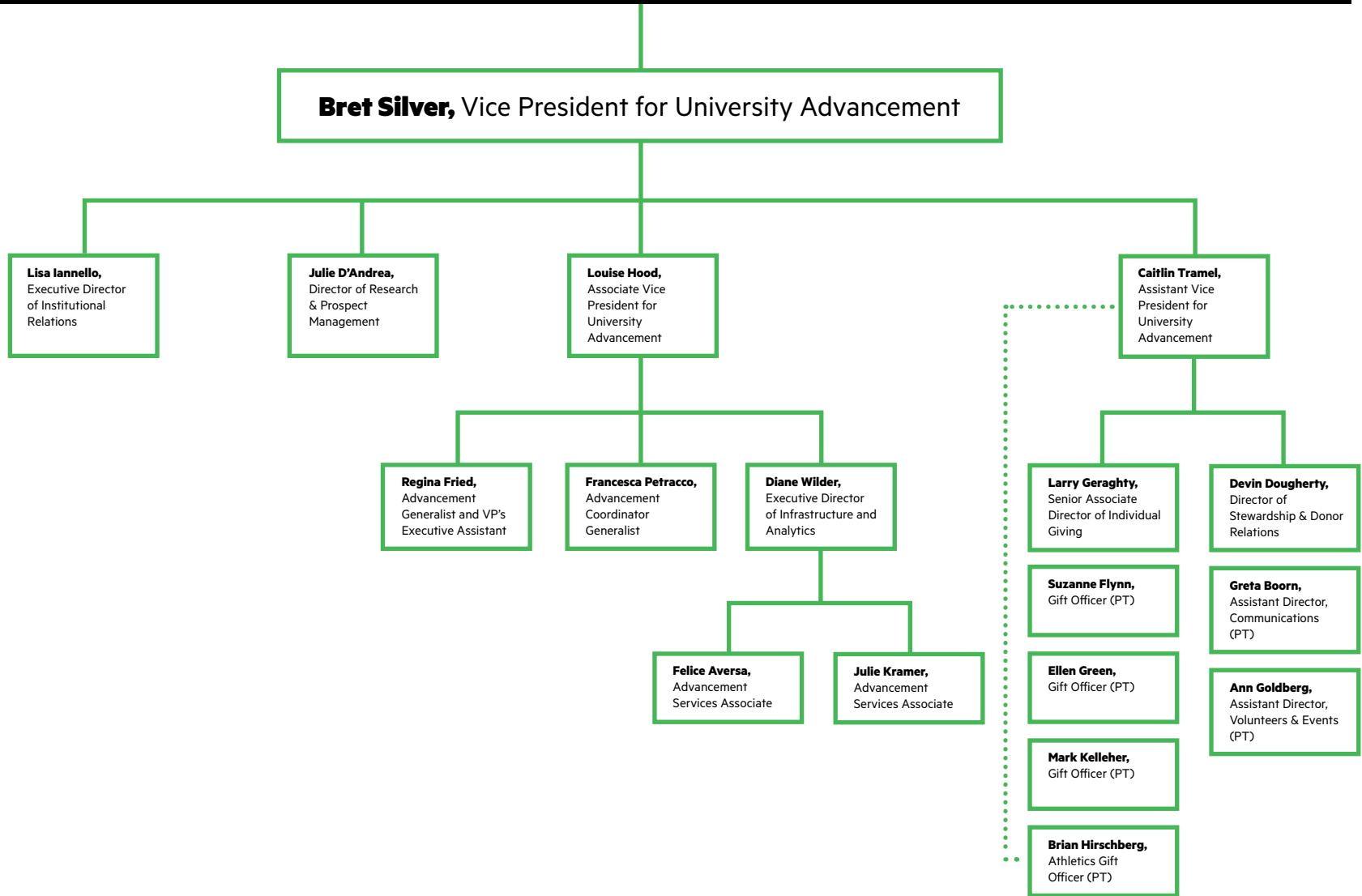
Academic Affairs (Theological School)

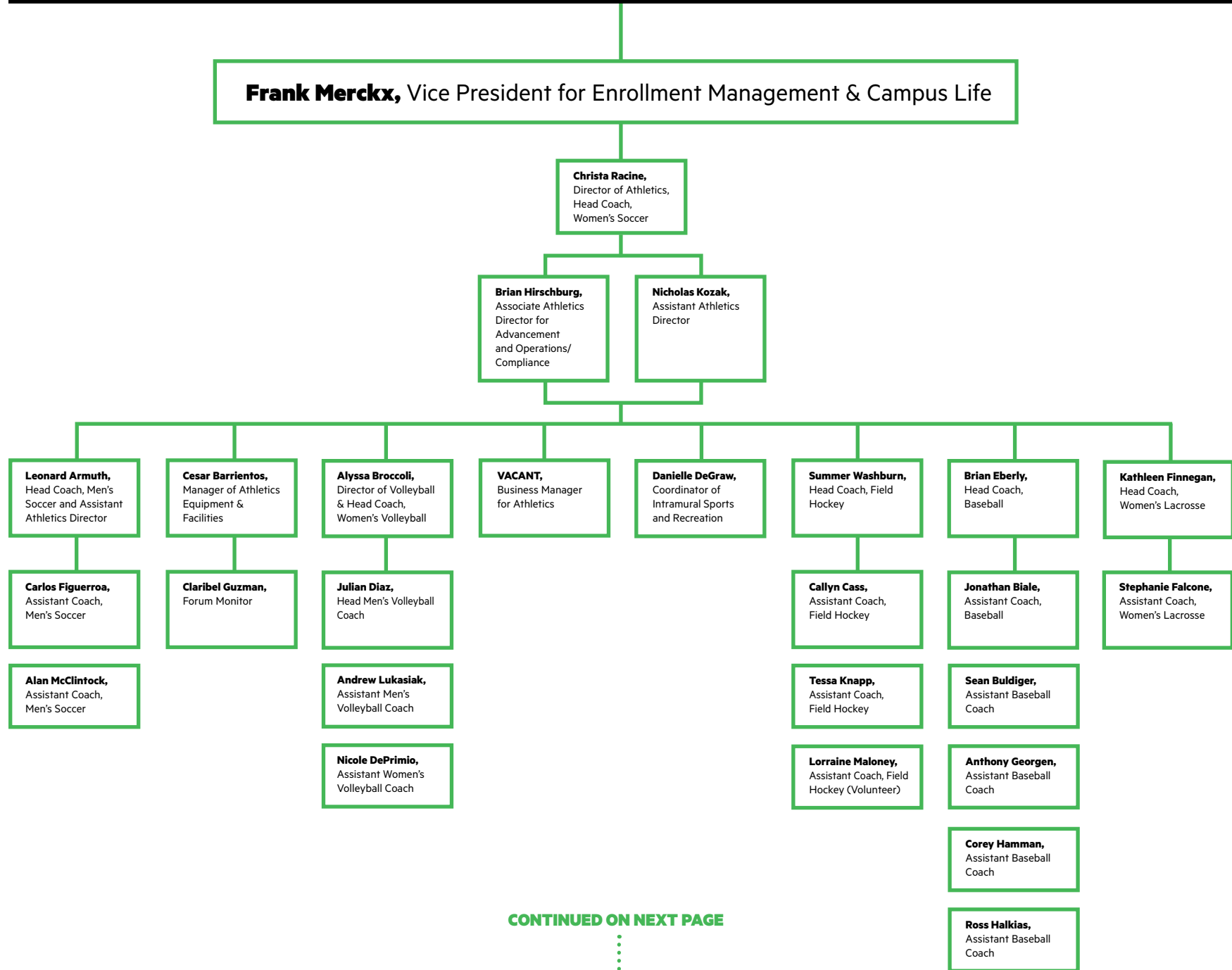


Academic Services



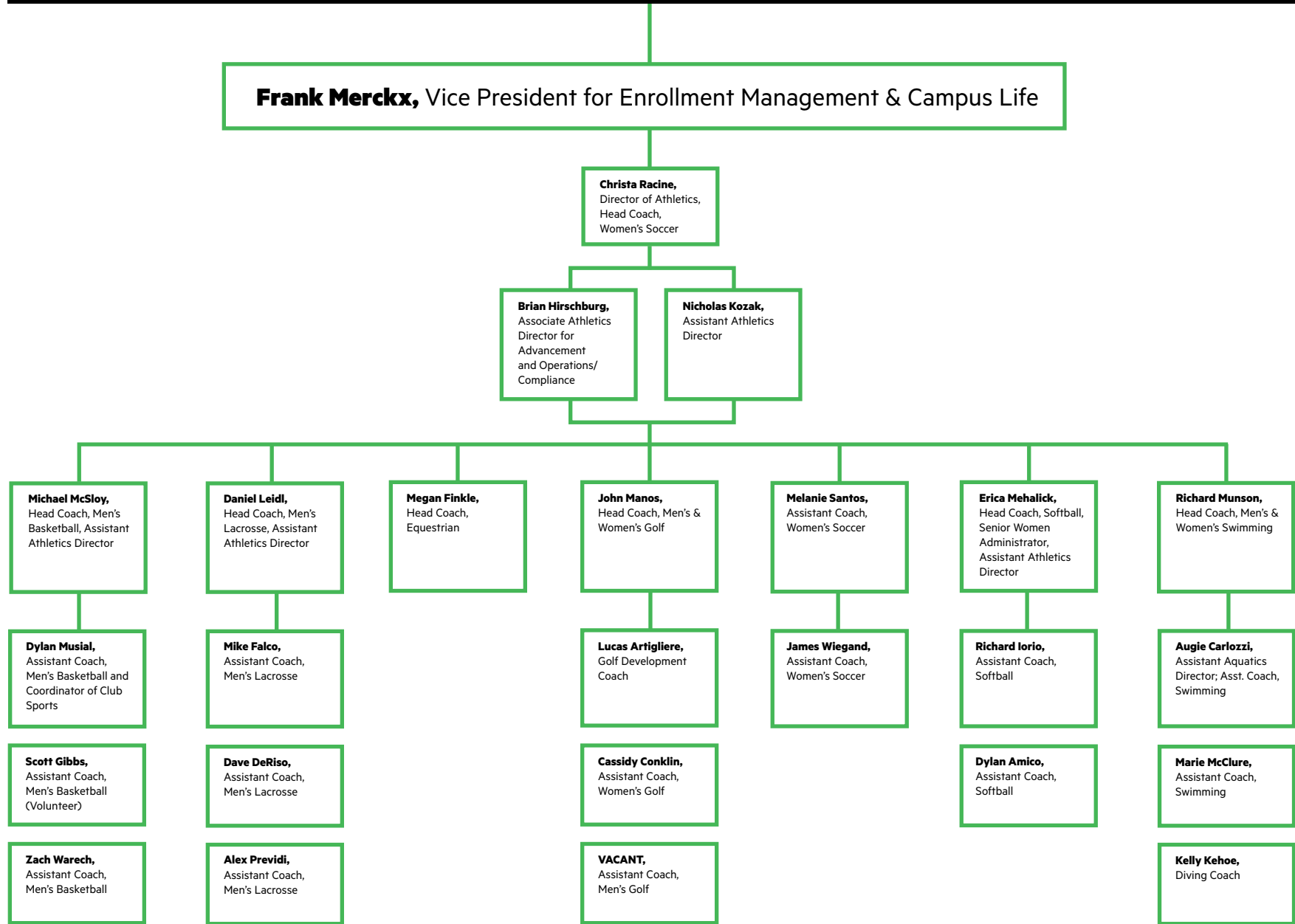
Advancement





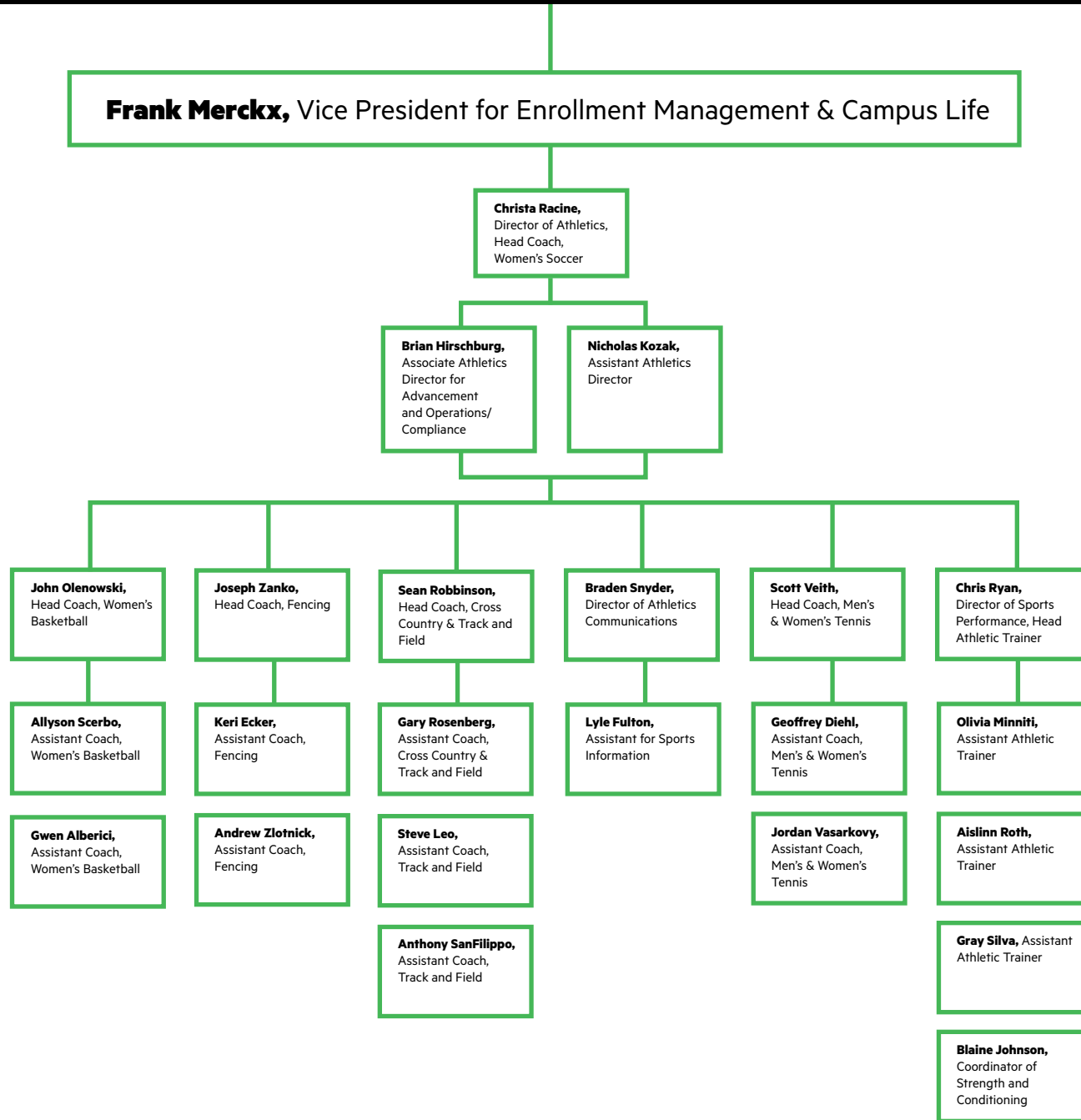
CONTINUED ON NEXT PAGE



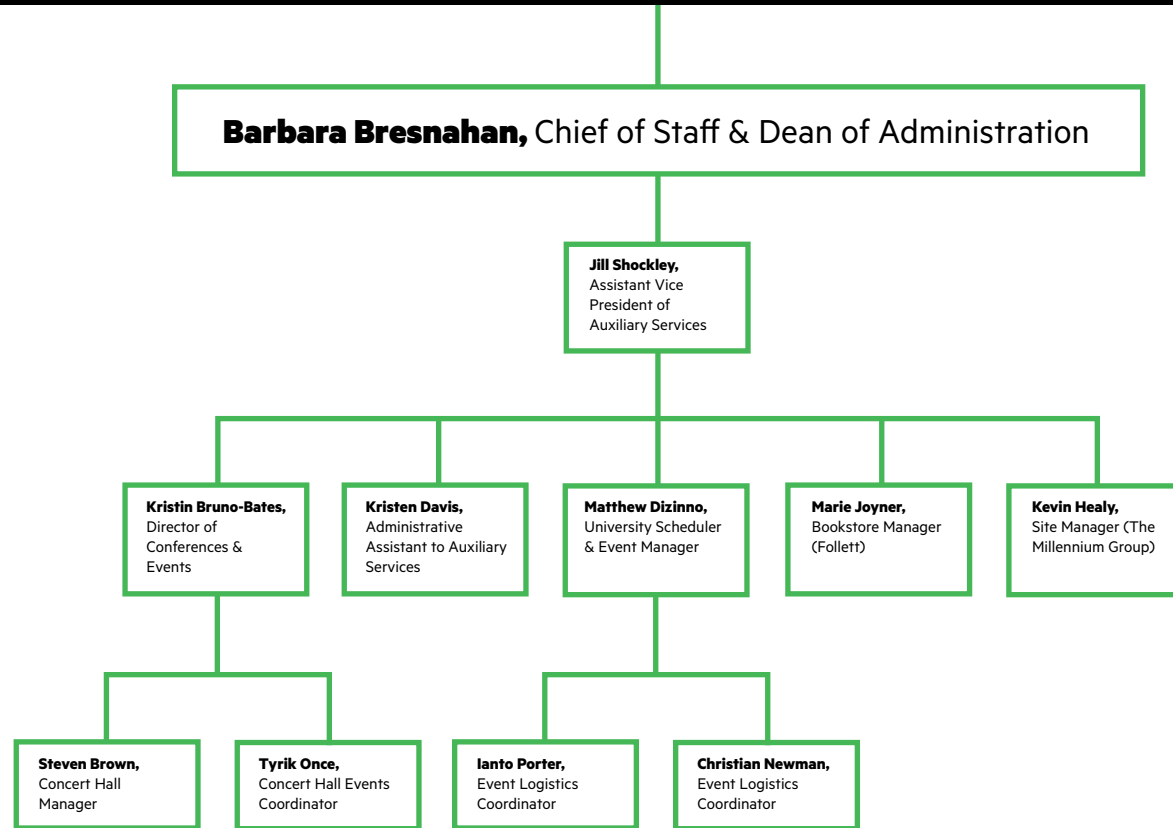


CONTINUED ON NEXT PAGE

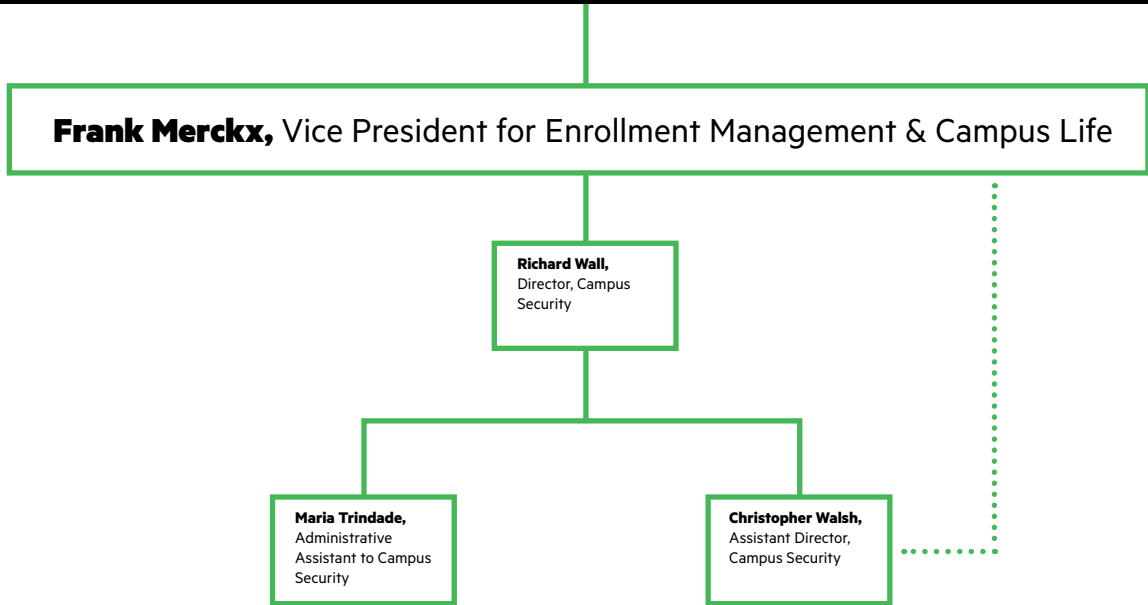




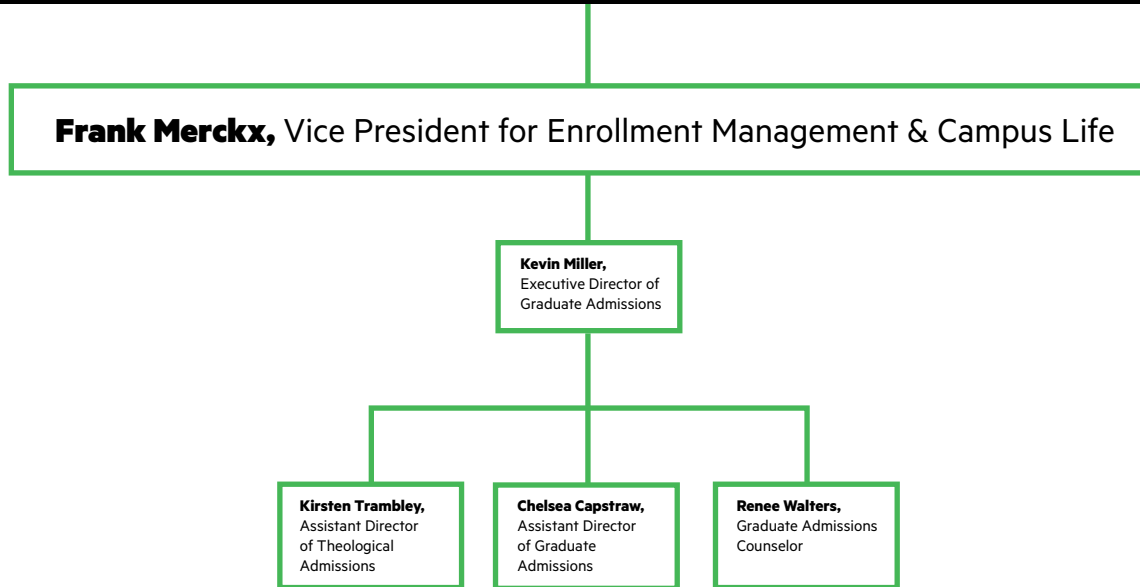
Auxiliary Services



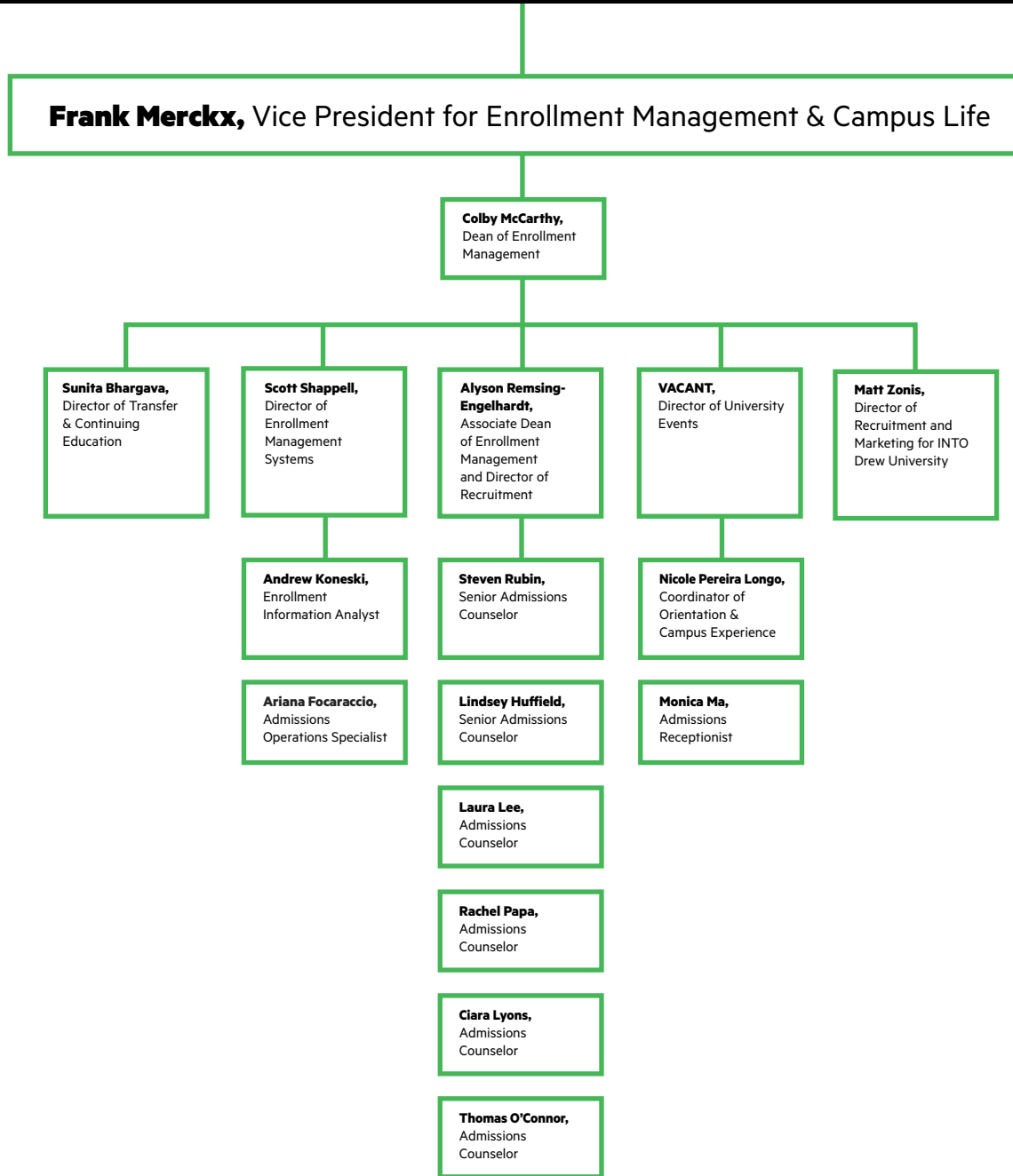
Campus Security



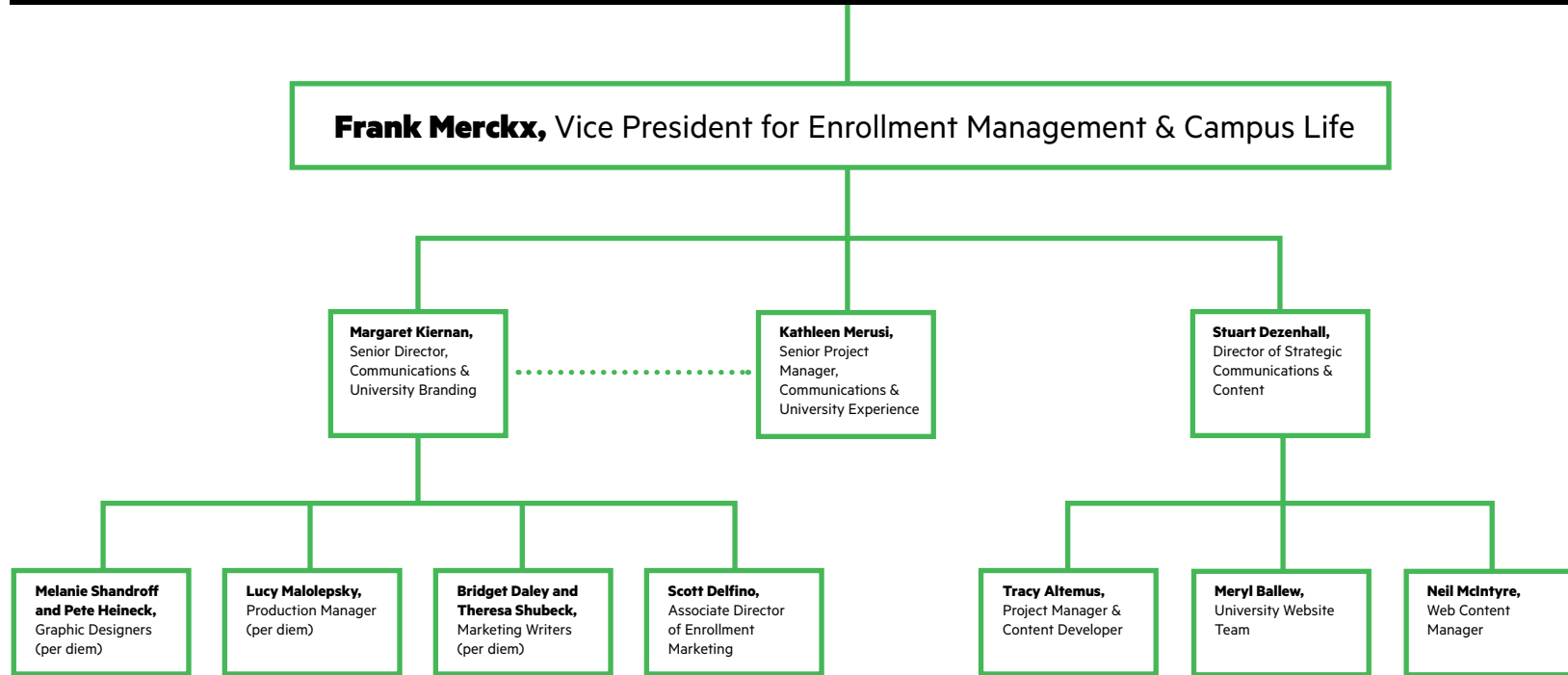
Caspersen School of Graduate Studies and Theological School Admissions



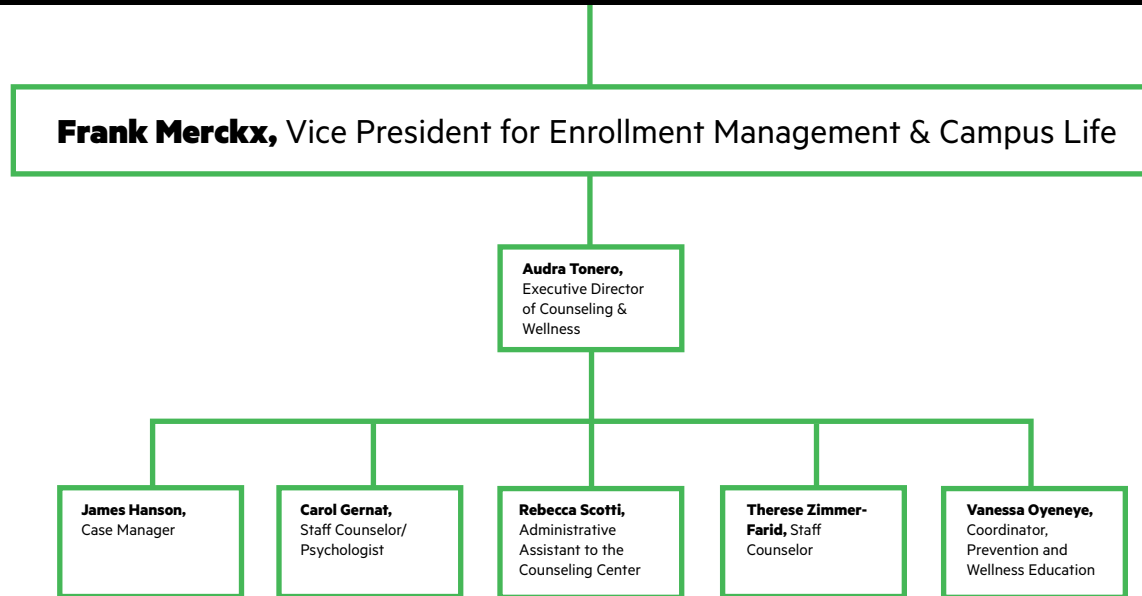
CLA Admissions



Communications & Marketing



Counseling Center



Enrollment Management & Campus Life and Student Affairs

Frank Merckx, Vice President for Enrollment Management & Campus Life

Cynthia Garrett,
Title IX Coordinator
& Lead Investigator

Laura Arthur,
Executive Director,
International
Student & Scholar
Services for INTO
Drew University

Christa Racine,
Director of
Athletics

Margaret Kiernan,
Senior Director,
Communications
& University
Branding

Audra Tonero,
Executive Director
of Counseling &
Wellness

Colby McCarthy,
Dean of Enrollment
Management

Kevin Miller,
Executive Director
of Graduate
Admissions

Joan Galbraith,
Director of Health
Services

Michelle Brisson,
Dean of Students

Richard Wall,
Director, Campus
Security

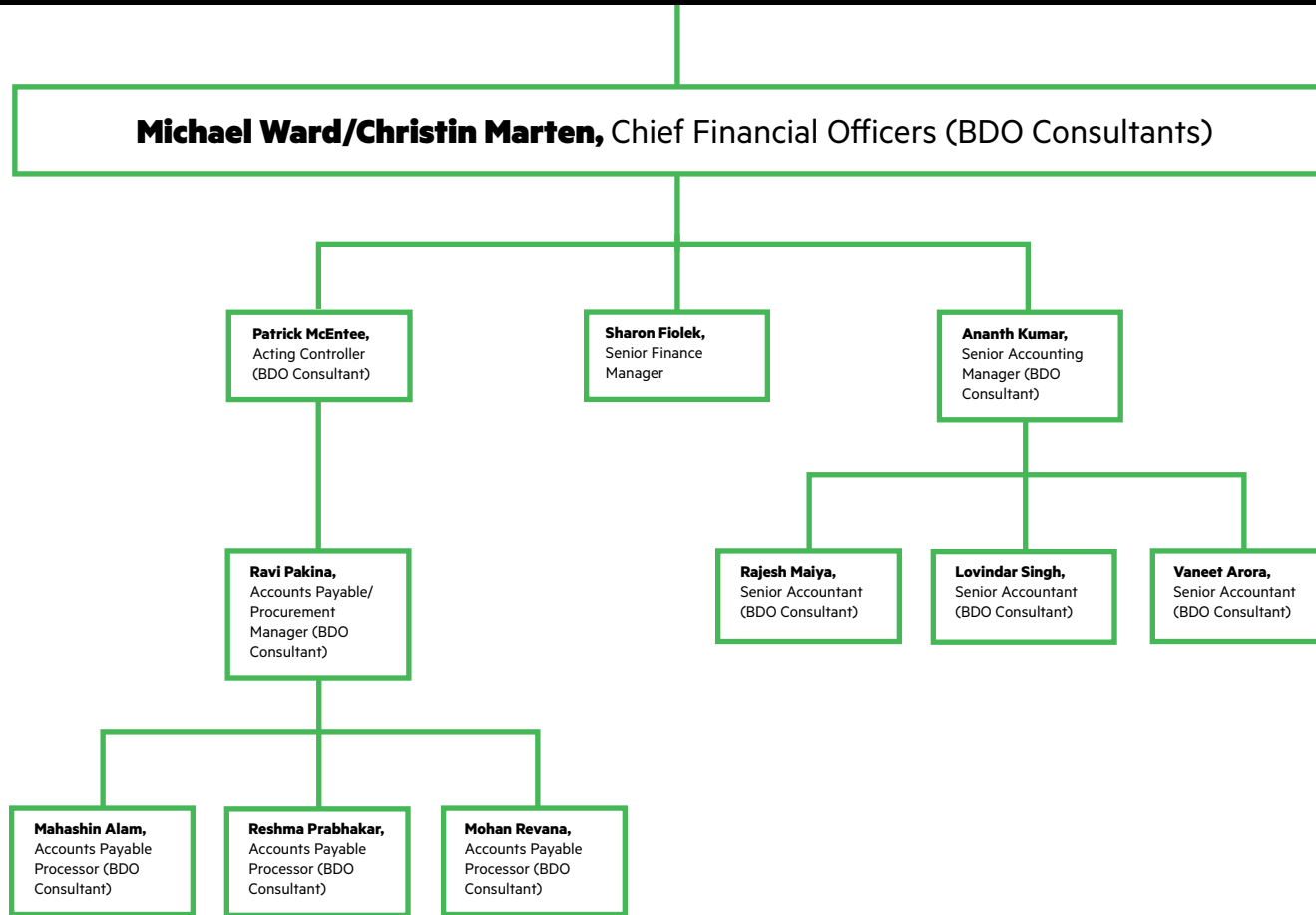
**Tanya Linn
Bennett**,
Associate Dean
for Vocation
& Formation,
University Chaplain

**Lynn Keefer-
Vogel**, Executive
Assistant &
Deputy Title IX
Coordinator

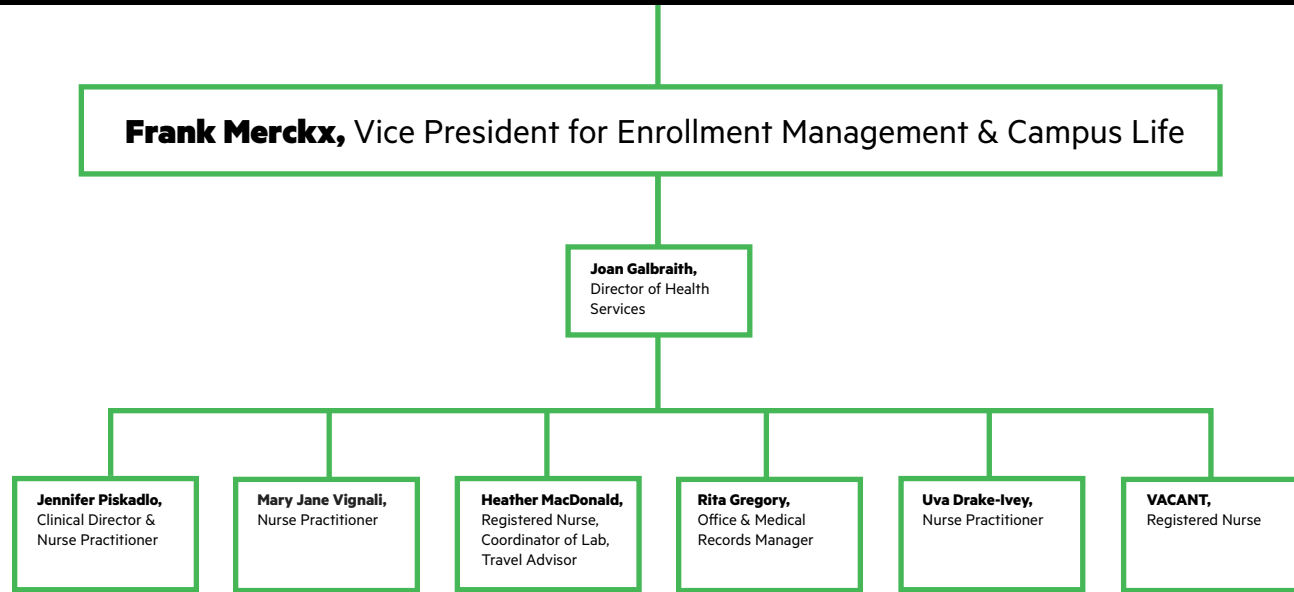
Kathleen Merusi,
Senior Project
Manager,
Communications
& University
Experience

Stuart Dezenhall,
Director of
Strategic
Communications
& Content

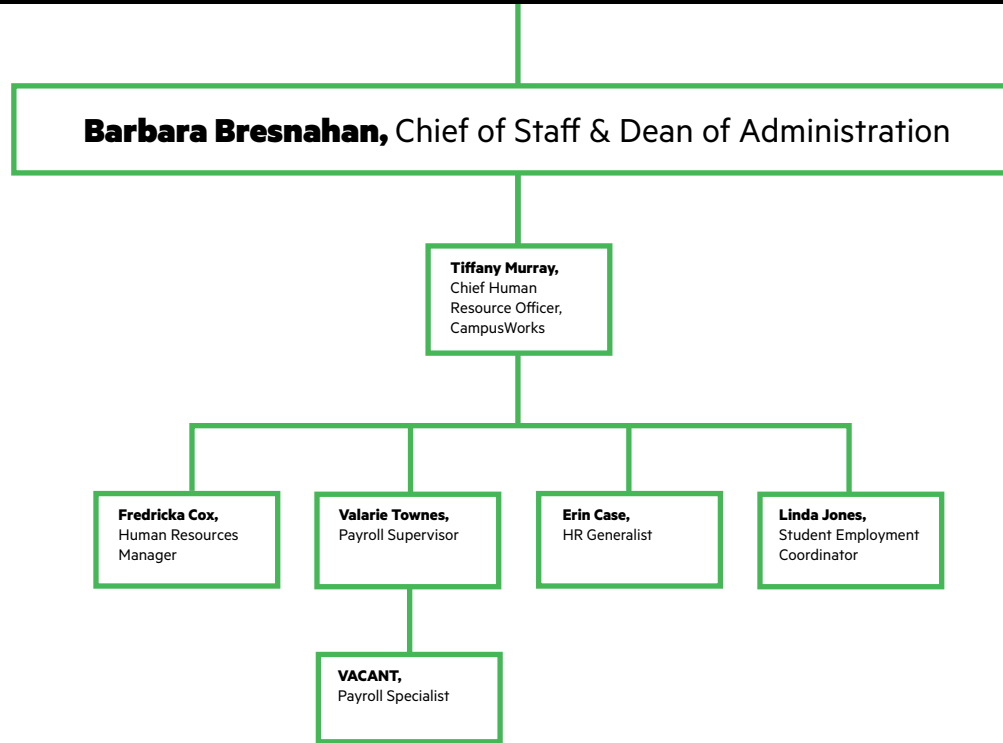
Fiscal Operations



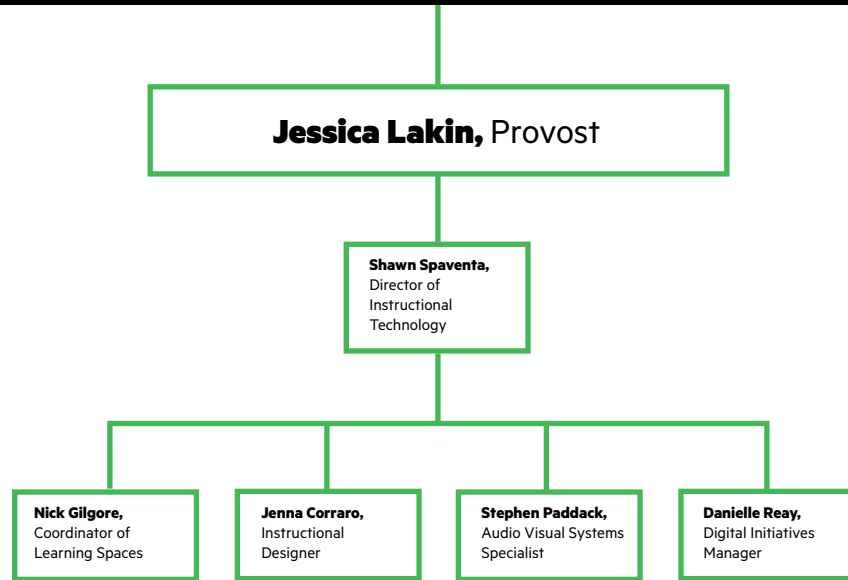
Health Services



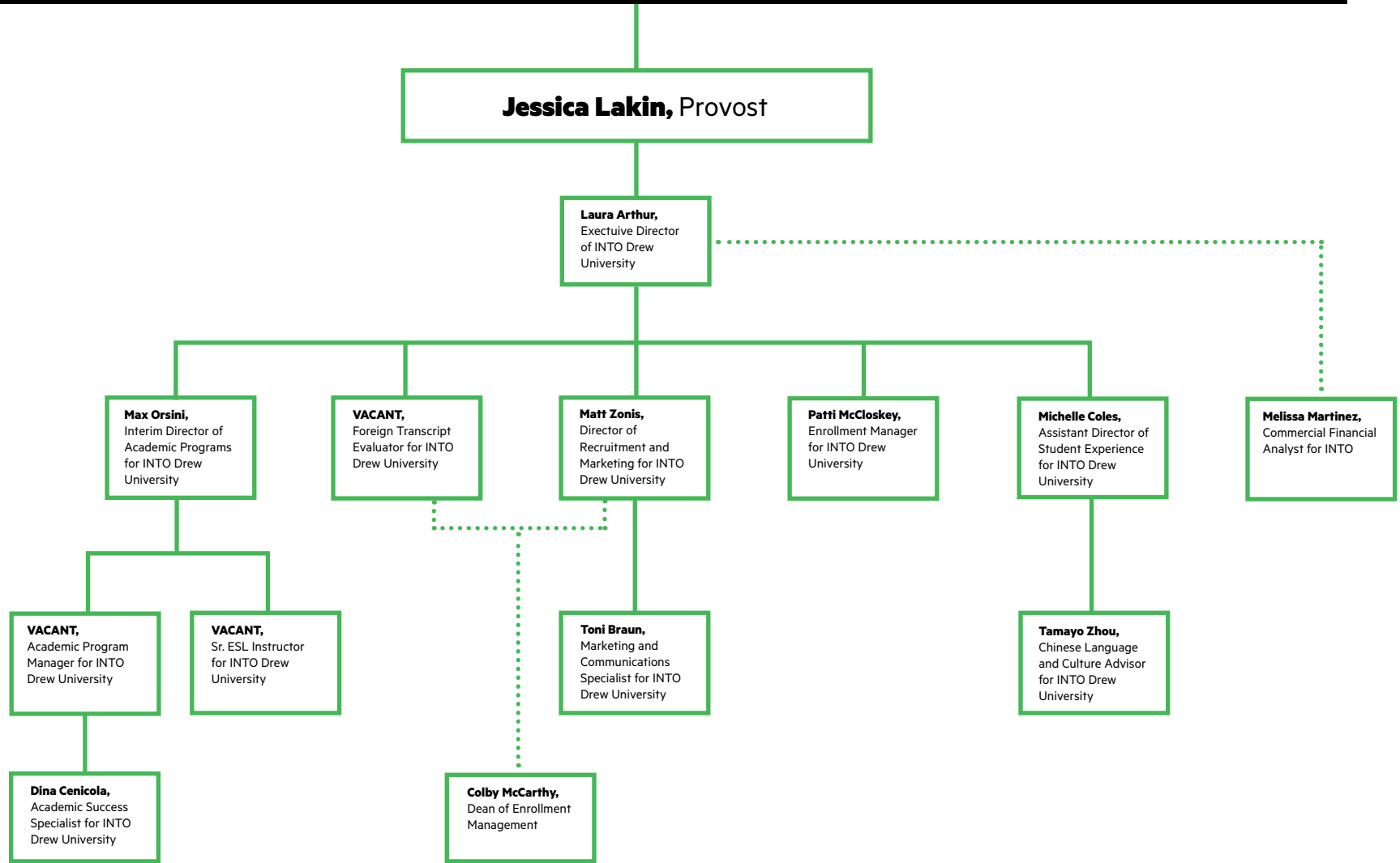
Human Resources, Payroll & Student Employment/CampusWorks

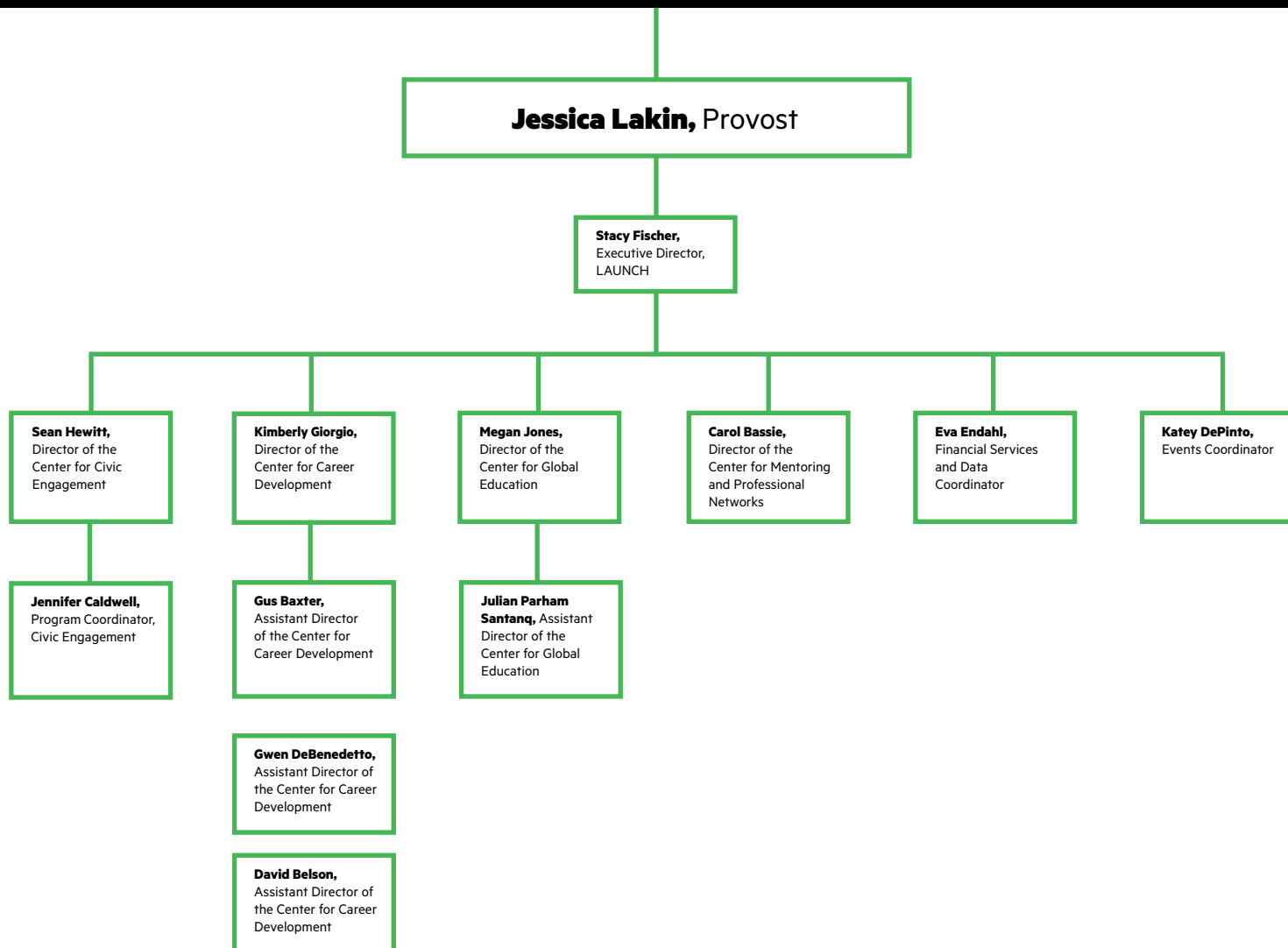


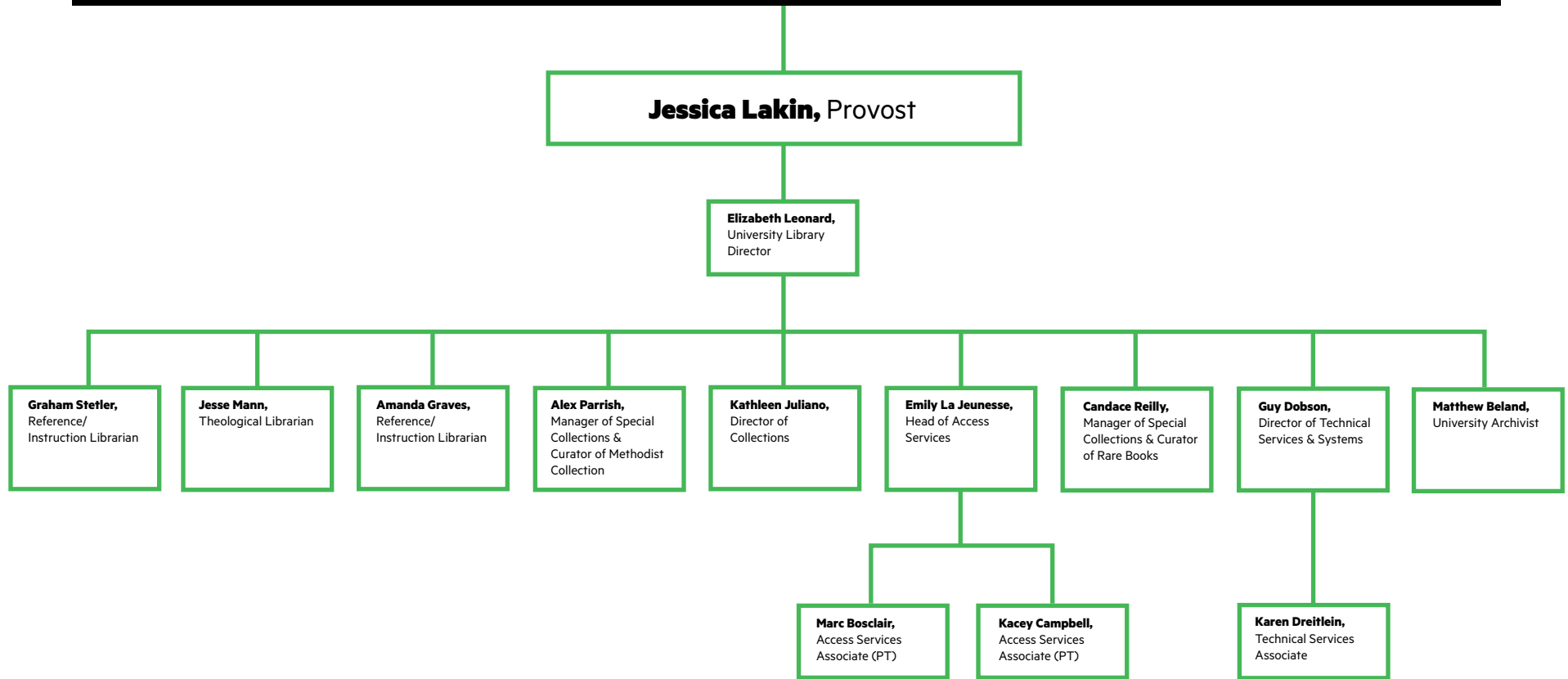
Instructional Technology



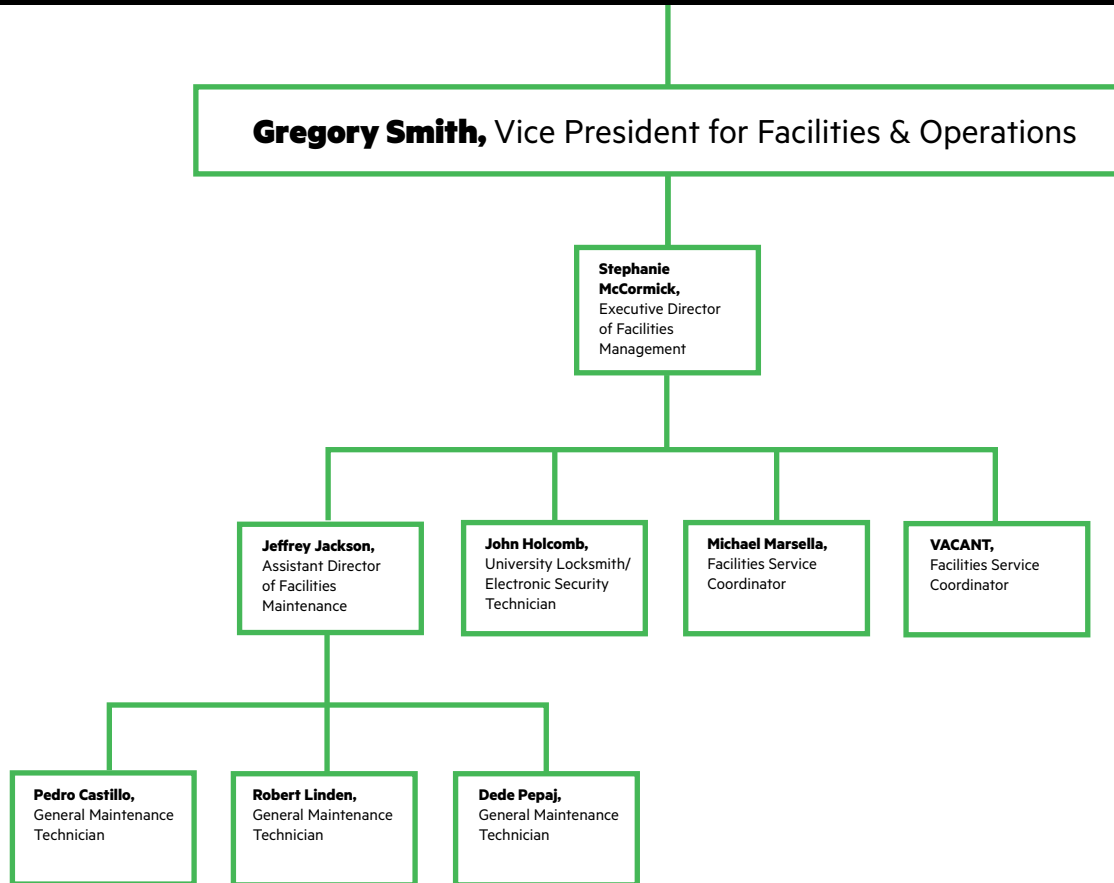
INTO Drew Administration



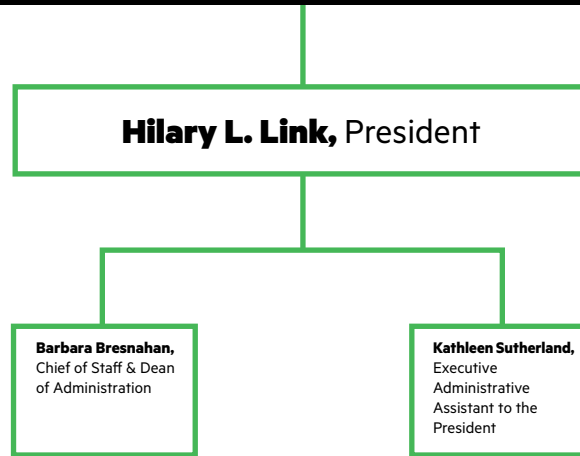




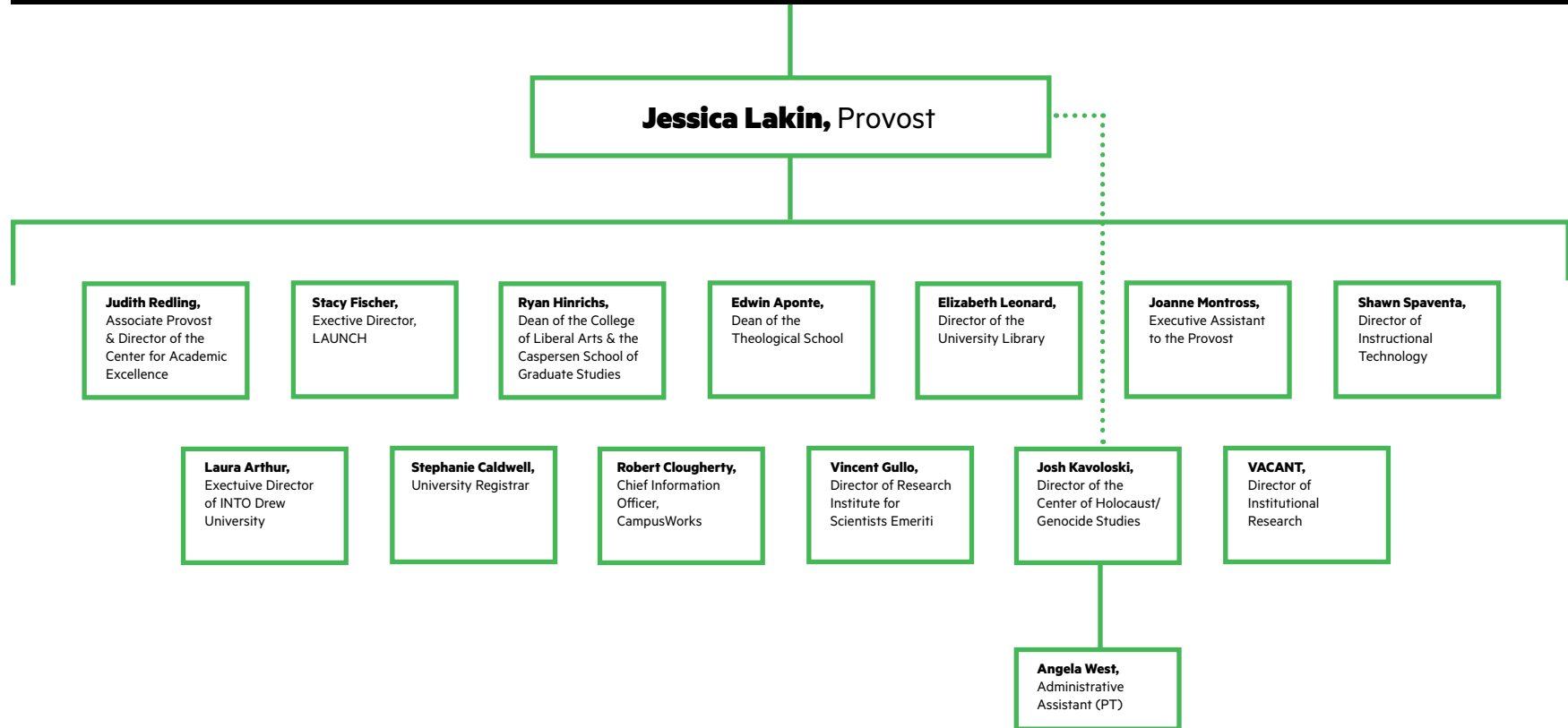
Plant Administration



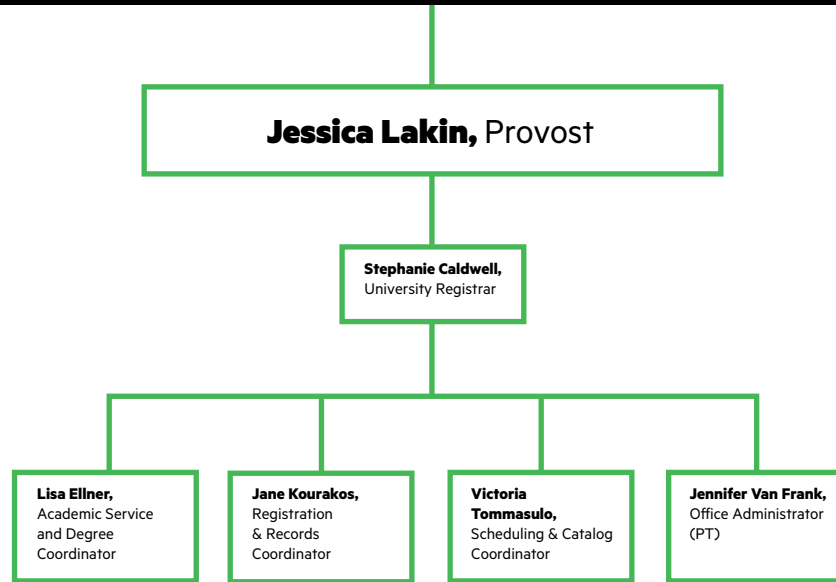
President's Office



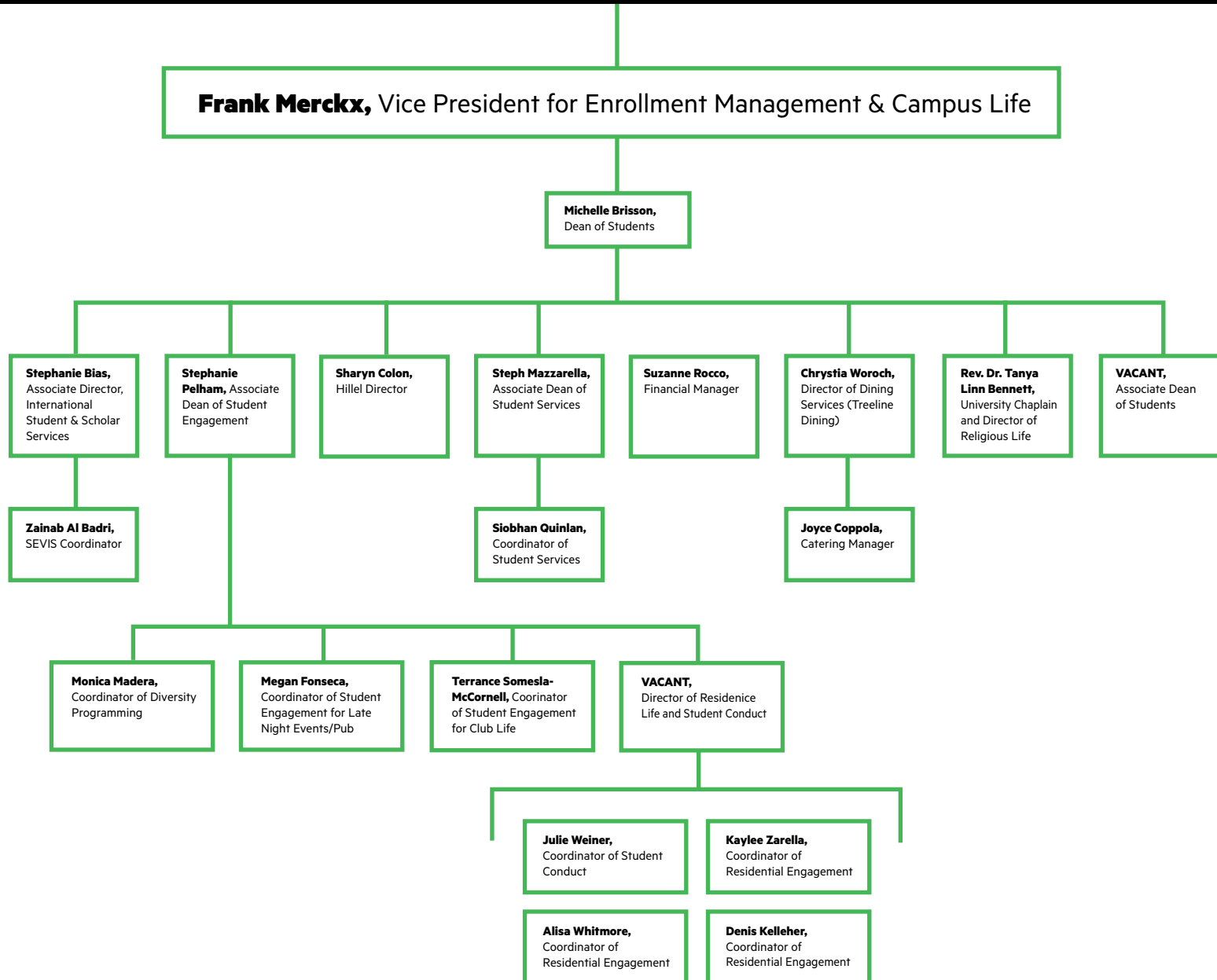
Provost's Office Leadership



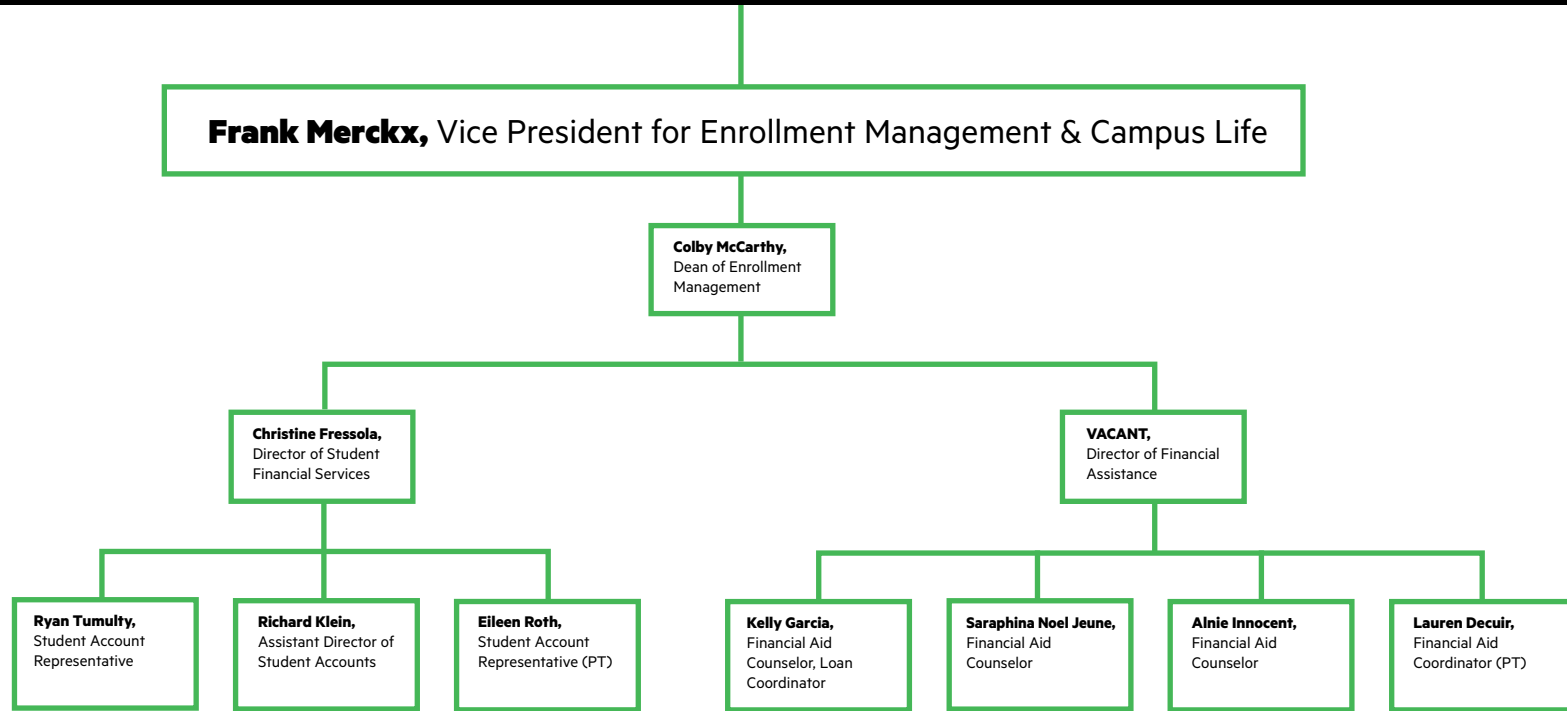
Registrar's Office



Student Engagement



Student Financial Services



University Technology/CampusWorks

